

Round

North Long

A stylized blue graphic representing a lake basin with several irregular shapes and a thin line connecting them, serving as a background for the title text.

# LAKE

## ASSOCIATIONS

SPRING 2024





## NORTH LONG LAKE

### BOARD OF DIRECTORS

PRESIDENT | Jim Anderson  
(Merrifield Bay) • jim.anderson@northlong.org

VICE PRESIDENT | Chuck Knopik  
(Merrifield Bay) • chuck.knopik@northlong.org

SECRETARY | Martha Weaver West  
(371 Bay) • Martha.west@northlong.org

TREASURER | Patrick Schiller-Michels  
(371 Bay) • patrick.schiller-michels@northlong.org

### BOARD MEMBERS

Alan Albrecht (Merrifield Bay)  
alan.albrecht@northlong.org

Jim Cook (Big Lake)  
jim.cook@northlong.org

Harris Goldstein (Merrifield Bay)  
harris.goldstein@northlong.org

Sandy Loney (371 Bay)  
sandy.loney@northlong.org  
and 218-838-6968

Mary McCormick (Big Lake)  
mary.mccormick@northlong.org

Bill Schmidt (Big Lake)  
bill.schmidt@northlong.org

Becky Shawgo (Big Lake)  
becky.shawgo@northlong.org

## ROUND LAKE BOARD OF DIRECTORS

PRESIDENT | Terry Waagmeester  
twaags@hotmail.com | 218-234-9333

SECRETARY | Ann Kalgren  
ajkalg@comcast.net | 218-821-4818

TREASURER | Sue Donovan  
sdo@live.com | 952-292-9746

PAST PRESIDENT | Mark Parrish

### BOARD MEMBERS:

Luke Vander Aarde  
Luke@agmotion.com | 612-437-7697

Bob Carter  
Rcarter411@gmail.com | 612-719-2130

Scott Fisher  
neliquor@gmail.com | 218-513-1012

Linda Esser  
essersplace@charter.net | 218-963-2752

Michael Haarstad  
Michael.haarstad@gmail.com | 701-388-9888

Pat Heinen  
PatandNick@gmail.com | 218-820-4083

### NEWSLETTER EDITORS

Harris Goldstein (North Long Lake)  
harris.goldstein@northlong.org

Phyllis Trcka (Round Lake)  
Trcka008@umn.edu | 507-273-2272

Ice Out.....	IFC
President's Message   North Long Lake .....	1
Weed Disposal .....	1
President's Message   Round Lake .....	3
Invasive Crayfish Found in Alexandria Lake .....	3
In Memoriam .....	4
New Brainerd Area Fisheries Supervisor .....	5
Starry Stonewort Found in Nearby Lake.....	6
Lead Free Tackle.....	7
Milling An Oak Tree.....	8
Loons 101 .....	9
Spring Highway 371 Litter Pickup .....	10

## NEWS AND NOTES FROM NORTH LONG LAKE

NL Annual Meeting & Picnic.....	11
Fish Consumption Advisory .....	11
371 Bay Boat Parade .....	12
North Long Lake Boat Access on Hwy 371 .....	13
North Long Lake - Call for Photos! .....	13
North Long Lake Membership.....	14-15
North Long Lake Financials.....	16-17

## NEWS AND NOTES FROM ROUND LAKE

Round Lake Annual Meeting.....	18
2nd Annual Fourth of July Round Lake Boat Parade .....	19
Round Lake Fisheries Report .....	20
RLIA & RLID Board Vacancies .....	21
Membership Levels.....	22-23
Membership Renewal.....	23
Round Lake Financials.....	24
Round Lake Clothing and Accessories .....	25

## Ice Out

Ice out on North Long Lake this year was about 2 weeks earlier than the previous recorded earliest date of April 1, 2010. And the same for Round Lake, whose previous recorded earliest date was March 31, 2000. Records have been kept since 1953.



# President's Message | North Long Lake

Jim Anderson | President



Greetings to all property owners and supporters of North Long Lake

Although my wife and I have only lived here eight years, I doubt if anyone can remember two ice outs in one year. I almost had my dock put in after the original ice out. Since I live on the east side of Merrifield Bay, I am glad that

I changed my mind. With heavy northwest winds, we had a pretty good ice buildup on the second ice over. It will be interesting to see how the early ice out and the lack of snow will affect early fishing and aquatic vegetation.

Each year the board tries to understand what issues are most important to all of you and set goals to try to address these issues. Many of these issues are the same every year and we will continue to monitor these and take actions when feasible. The following are the main issues and what we are monitoring.

## **AQUATIC INVASIVE SPECIES**

The good news is that for the second year in a row, the DNR determined that Curly Leaf Pond Weed is not pervasive enough to warrant treatment. That means that our treatments are working to contain the problem. However, there is a constant threat that new invasive species can be introduced into the lake. We are starting a program to regularly monitor the boat landings to ensure that if new species are introduced, we will know as soon as possible so we can eradicate it before it becomes widespread. We could use volunteers to help and if you are interested, please contact any board

member for more information. There is a lot of research on using good RNA and genetics to control invasive species including zebra mussels. We will stay abreast of this ongoing research.

## **WATER QUALITY**

We still contract with A W Research to monitor water quality and if there is any significant change, we investigate possible sources. We continue to monitor all 3 bays and any inflow ditches that could contribute to additional phosphorus or nitrogen.

## **INCREASE WALLEYE POPULATION**

We have started a separate walleye fund and are working with the DNR to understand what role the association can play in the overall fish management strategies.

## **WATER LEVEL**

Unfortunately, the main factor for this issue is mother nature and mother nature does not care what you or I think. We do have a weir in Sugarbush creek that was originally installed to help control water flowing between North Long Lake and Round Lake. Recently, 2 board members did an onsite inspection of the weir and found it in disrepair and not doing what is what intended to do. I know we have reached out in the past, but I am currently trying to talk to our DNR hydrologist to understand how we might be able to bring the weir up to its original intent.

In other news, the DNR has put the 371 ramp update as a project. The funding is not completely finalized, but it is a good possibility this will happen sooner than later. Lastly, I hope everyone has another great summer at the lake filled with family and friends. After all, that is one of the benefits of having a lake home.

**We all end up with lake vegetation on our shoreline and many of us need a place to dispose of the vegetation that washes up on our beach. The Crow Wing County landfill will allow you to drop the weeds off at no charge.**

**Another option is Brambling Rows Farm south of Brainerd at 7664 Roscoe Rd. Brambling Rows sells locally grown produce at our Farmer's Markets. They will take your weeds and give them a second life as compost. Vegetation can be dropped off outside the gate by the leaf piles any time; but between 10am and 5pm if you would like "thank you" vegetables. They can accept them through October.**

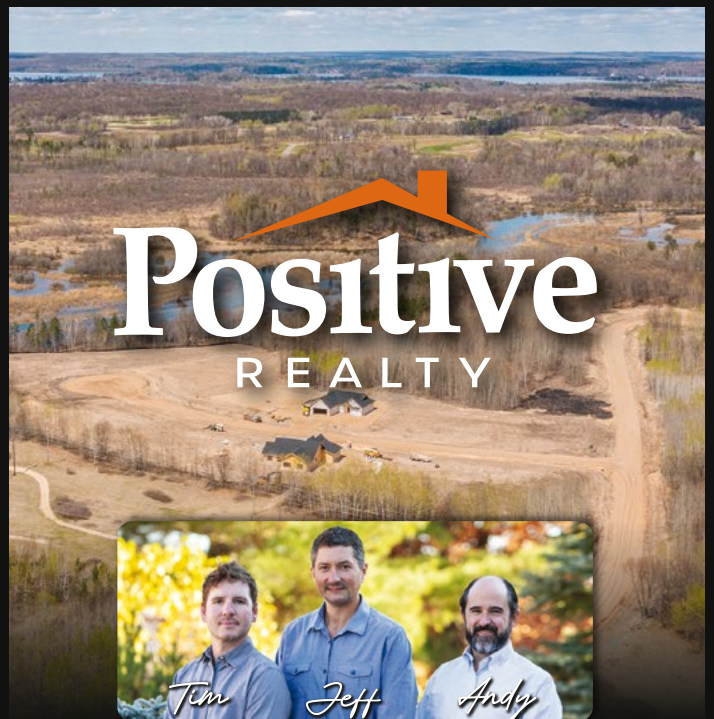
**Unfortunately, no grass clippings as there is too great a risk of herbicides.**







# SANCTUARY RIDGE



**Positive**  
REALTY



**Nelson Torfin Hayes**  
REAL ESTATE GROUP

info@lakehome.com

218.270.4032

[www.lakehome.com/SanctuaryRidge](http://www.lakehome.com/SanctuaryRidge)

- Maintenance free homes starting at \$480K
- Single family wooded lots starting at \$65K
- Convenient location off The Pine Beach Rd.



# President's Message | Round Lake

Terry Waagmeester | President



Hello fellow Round Lake residents.

For those of you who "braved" the winter you know it was a mild one with minimal snow fall and unseasonably warm weather. Fortunately, we have been having some good spring rain to replace the lack of snow and this continues to make Bishops Creek easily

navigable and should be for the summer provided we continue to receive adequate precipitation.

We contracted with Lakes Restoration again to test for curly leaf pondweed the 1<sup>st</sup> week of May. If there is any growth detected, they will treat early in the season based on water temperature. Let's cross our fingers that we will have another year like the last few years of minimal to no growth detected. A special thank you to Mark Parrish for coordinating this.

The buoys marking known hazards and the channel to navigate to Gull Lake are in place. A special thanks to John Just and Luke Vander Aarde for their placement and removal in the spring\fall.

I have a couple announcements: The Nashway Road reconstruction between 371 and East Lake Hubert Road started on April 22<sup>nd</sup>. It is my understanding that Nashway Road will be closed to through traffic this summer. Also the recycling center in Nisswa has been shut down as of May 1<sup>st</sup>; so plan accordingly for the disposal of your recycling items.

The levels for your tax-deductible donations to the Round Lake Association will be adjusted this fiscal year (beginning July 2, 2024) per the below chart.

1.)	Owl	\$ 25 - \$49.99
2.)	Loon (new level)	\$ 50 - \$74.99
3.)	Hawk	\$ 75 - \$99.99
4.)	Osprey	\$100 - \$199.99
5.)	Eagle	\$200 or more

The primary use of the funds collected is to maintain Bishops Creek in a condition that makes navigation between Round Lake and Gull Lake possible. The navigability of the creek is crucial to Round Lake's property Values.

The Annual meeting will be held again this year at the Nisswa Community Center on June 15<sup>th</sup> starting at noon. This is a great time to meet or reconnect with some of your fellow Round Lake residents. Please bring your family and enjoy this social event.

I would like to request your help. We have a couple of board members whose terms are up, and they would like to step down. This will create openings on the board, so we are looking for folks to fill these roles. Please contact me or one of the board members if you are interested.

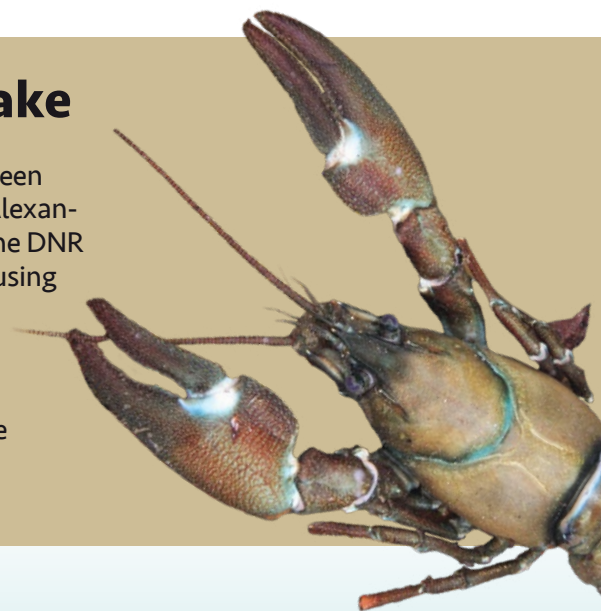
I would again like to thank all the board members and volunteers for their hard work this past year.

Hope to see you all on June 15<sup>th</sup>.

## Invasive Crayfish Found in Alexandria Lake

The Minnesota Department of Natural Resources says the signal crayfish has been found in a state lake for the first time. They were found in Lake Winona, near Alexandria. They are bigger and more aggressive than crayfish native to Minnesota. The DNR says they can spread between connected waterways and by people (including using for bait), and can even "crawl over land at night during wet weather".

Signal crayfish are bluish-brown to reddish-brown, with patches near the hinges of their claws that resemble a signal flag. The DNR asks anyone who spots them to write down the exact location, snap a photo, and even "keep the specimen" and contact them. For our (Brainerd) area, contact Tim Plude at [timothy.plude@state.mn.us](mailto:timothy.plude@state.mn.us) or 218-203-4354.







## In Memoriam: Jim Weiss, NLLA Board President

As we announced earlier this year, we are extremely sad to report the death of Jim Weiss, our NLLA board president. Jim died unexpectedly on February 16th from a medical condition.



Jim was a friend to all who knew him. He worked tirelessly on behalf of our lake association and for the long term health of North Long Lake. Jim enjoyed the lake as well; you probably saw him out with his wife Jan in one of the few sailboats on the lake. Or on his pontoon with his entire family.

He and Jan moved to North Long Lake after retiring from Hormel in 2017. Jim was elected to the NLLA board in 2020 and elected president in 2021. As NLLA board president, Jim was an effective and respected leader; taking on the role as board president soon after joining the board. Beyond his willingness to take responsibility as leader of our association, Jim was enthusiastic about taking part in all of our projects. And, perhaps most important of all, he became our friend.

We will not forget him.





# New Brainerd Area Fisheries Supervisor

The new Brainerd Area Fisheries Supervisor is not new to the area. Since March 2011 Mike Knapp has been the Assistant Area Fisheries Supervisor at the Brainerd DNR. He started working for the DNR Fisheries in 1997 in the metro area as an intern and in student worker roles. He spent a year as an Aquatic Plant Management Specialist in St. Paul before coming to the Brainerd office for 8 years as a Fisheries Specialist. Mike was promoted to Assistant Area Supervisor at the Aitkin office in 2009 and then came back to the Brainerd office a year and a half later. In addition to his DNR roles, Mike has taught Aquatic Biology at Bethel University and at Central Lakes College and is an Assistant Nordic Ski Coach at Brainerd High School. He's grateful to work in an area with such great aquatic resources and with one of the best and most productive fisheries crews.



## A Local Company You Can Trust

- ISA Certified Arborists • Structural Pruning and Routine Maintenance
- Insect and Disease Management • Tree Preservation Plans
- Tree Injections • Assessing Hazardous Trees • Tree Removal • Mulch
- Brush Chipping • Stump Removal • Crane Removal

**Mike's Tree Company**  
A Local Company You Can Trust

**Mike's Tree Doctors**  
Your Trees, Our Passion

**Mike's Mulch**  
Premium Mulch and Wood Chips

5906 Pine Beach Rd  
Brainerd, MN 56401  
Insured/Certified  
FREE Estimates

218.825.8207 • WWW.MIKESTREECOMPANY.COM





## Starry Stonewort Found in Nearby Lake

The Minnesota Department of Natural Resources has confirmed the presence of the invasive algae starry stonewort in Middle Cullen Lake, just 6 miles north of Round and North Long Lakes

Minnesota DNR staff, who were conducting a curly-leaf pondweed survey, discovered starry stonewort about 100 feet from the Middle Cullen Lake public access. A follow-up survey is being conducted to determine the extent of starry stonewort distribution in the lake.

Starry stonewort is an algae that looks like some native aquatic plants. It is usually identified by the star-shaped white bulbils for which it is named. These bulbils typically don't become visible until late summer but were observed on the starry stonewort in Middle Cullen Lake. The early visibility of bulbils might be due to unusually warm winter temperatures and below-average snowfall this past winter.

Starry stonewort can form dense mats, which can interfere with recreational uses of a lake and compete with native plants. It is most likely spread when fragments have not been properly cleaned from trailered boats, personal watercraft, docks, boat lifts, anchors or other water-related equipment. Fragments can get tangled in trailers, motors, anchors and inside watercrafts (boats, canoes, and kayaks). Small bulbils, which may be hidden in mud and debris, can stick to trailer bunks, anchors, ropes, fabric, footwear, as well as scuba, fishing, and hunting gear. A small fragment or bulbil can start a new population.

Starry stonewort has never been eradicated from any U.S. lake or river, but treatment or careful removal can help reduce the risk of spread and relieve associated nuisance impacts on water-related recreational activities. Early detection is key to effective management.

If you think you've found starry stonewort or any other invasive species new to our lake, please report it to the Minnesota DNR by contacting their area invasive species specialist. And also let us know at [ais@northlong.org](mailto:ais@northlong.org).

*Photo Courtesy of Minnesota DNR*



## Lead Free Tackle

Lead for sinkers and jigs has been a staple in our tackle boxes for many years. But, according to the National Loon Center, lead poisoning is responsible for 25% of all adult common loon deaths. It's also a common cause of fatal poisonings inflicted upon bald eagles. Loons can mistake pieces of lead for rocks, which they swallow to help with digestion, according to the National Loon Center. They can also eat fish carrying lead tackle in their stomachs.

Just as steel shot has replaced lead shot in our shotgun loads, it's time to replace lead tackle with a safer alternative. Now, a major Minnesota-based tackle company has provided a boost to the to eliminate lead from tackle equipment.

The National Loon Center recently announced that the Lindy Tackle Company had become the first company to take its Lakes and Loons Legacy Pledge. The company has agreed to eliminate lead from all of its products by 2027. It also released a line of lead-free products designed by Jeff Zernov, a member of the Minnesota Fishing Hall of Fame.

The North Long Lake Association will collect your old lead tackle at our annual meeting in July. Please consider replacing your lead tackle with safer, lead-free tackle.





# Milling An Oak Tree

By Alan Albrecht

There are a number of oak trees on our property - one, however, stood out. It was about 100 feet high and at the base it had a diameter of at least five feet. The first 60 feet of the tree was as straight as an arrow.

We always felt that when the time came when it was necessary to cut down that tree, we would have the wood from the tree milled into usable lumber and that we would use the lumber for remodeling our existing cabin. Unfortunately, that came about due to the failing health of the tree. We had the tree cut into 8-10 foot sections, rather than firewood length.

Our search for a portable saw mill led to Tyler Nelson. Tyler asked me what sizes of wood I wanted. I wanted some thicker sections for a future fireplace mantel, as well as a table or other piece of furniture. I also wanted two inch boards to resurface the flooring on a 1923 John Deere hay wagon. Otherwise, I told Tyler to use his best judgment.

On the day the milling was to be done, Tyler came and set up his machine. Tyler would roll a log onto the lifting arms of the machine and from there he manipulated the hydraulics to lift the log onto the cutting bed. Once on the bed, various rollers and arms manipulated the log until it sat perfectly level on the machine. We milled over 1600 board feet of wood that day. The lumber will need time to dry; for each inch of thickness, it takes approximately one year.



**Malibu** **MINNESOTA INBOARD** **WATER SPORTS**

**EXIS** WAKE RESEARCH

# MINNESOTA INBOARD

PROUDLY SUPPORTING MINNESOTA'S LAKES FOR OVER 30 YEARS

**Malibu**

**BOAT SALES · PRO SHOPS · SERVICE · MOBILE SERVICE · FIBERGLASS REPAIR · STORAGE · BOAT TRANSPORTATION**

EXCELSIOR | 720 Galpin Lake Rd  
BAXTER | 15779 Edgewood Drive  
DETROIT LAKES NOW OPEN! 259 CR-11

[MNINBOARD.COM](https://www.mninboard.com)



# Loons 101

By Phyllis Trcka

At last year's annual picnic, I was given the task to be the loon observer for Round Lake. Basically, I was to observe loon activities and count and report successful nesting to include chicks and adults. With that, I also found myself retrieving the artificial loon's nest that has sat idle from Bishop's Creek for the last several years. These are big tasks for someone who knew little about loons but should since I share space with them as a resident of the lake.

I was directed to discuss the loon observations with a former observer, Larry Stark and also thought to visit the Brainerd Public library where I found a marvelous book: *Loon Lessons* (uncommon encounters with the great northern diver) By James D. Paruk. Both have been excellent sources to help me become a beginning expert.

It is no surprise loons select a lake like Round as it offers many amenities they love. Round Lake has lots of food available for a large bird, deep clear water, plus it has a close proximity to other lakes with loons. Chemistry in lakes matters too. Loons prefer lakes lower in phosphorous with a bit higher pH. Not that they can sense the difference but the food they enjoy can. The loons arrive soon after ice out as they need the water to land. Loons are not built to walk easily. The males tend to arrive first which suggest they migrate to different locations then the females. Early loons get the best nesting locations, so it becomes a competition the minute they arrive. Loon pairs are monogamous all through the breeding season. The birds may select a different partner the following year but during the breeding and rearing season, they are monogamous. The female needs the male to help care and protect the chicks. Since physically they are capable of performing the same nesting and care, the males are important to the success of the nest.

Ice out is a busy time for a lake owner as well as a loon. The loons are pairing and selecting nesting locations as we try to get watercraft in the water needed for positioning an artificial nest and getting it anchored. This requires a lot of thought to find location a loon would prefer. Loons are territorial settlement birds and require the space from each other to focus on breeding and nurturing versus defending one's nest from another loon. Being aware of previous nest locations is critical as the loons will return to them. So, cage location must be given careful consideration before selecting a new location as to not infringe on an existing nest as the birds will battle. Loons prefer islands and sheltered bays to open shorelines and best by a steep versus gradual slope for diving and fishing. The nest needs to keep off shorelines due to mammalian predators plus shelter from winds as the nest can flood from waves. Building the nest inside the cage was easy as there is plenty of material on my shoreline to include Bull Rushes and moss.

So how did we do? The cage looked great and it appeared to have the perfect housing for a loon to love. I selected the NW corner of Round as was sure to not be near other pairs. It was about 30 feet from shoreline with plenty of food but more open than I wanted. Our best guess but our observations have proven the winds were too great and the nest was not selected. It is now back on shore for another attempt next year.

If you see these cages, keep your distance. The loons are sensitive to man intruders too. They will dive and return if threatened but cooling eggs and exposure adds threats to the success of the nest. Enjoy the loons and your water sports, just be aware to stay back and remind all your visitors to do the same. Wish me better luck next year. It was a fun project and was happy to be a part of it.







## Spring Highway 371 Litter Pickup

In a tradition going back many, many years, volunteers from the North Long Lake Association picked up litter along Highway 371 from S&W Bait at the south end to Ojibwa Road at the north end. We do this in the spring and in the fall. Volunteers this spring included:

Ralph Berning  
Char and Chuck Knopik  
Scott Koopmeiners  
Lynn and Patrick Schiller-Michels

Becky and Bob Shawgo  
Mike Villwock  
Rod Windjue

Thanks to Lynn and Patrick  
for organizing this event.





# *North Long Lake*

## **ANNUAL MEETING AND PICNIC**

### **SATURDAY JULY 20**

**LEGIONVILLE ON MERRIFIELD BAY (INDOORS, HANDICAP ACCESSIBLE).**

**10:00 AM - PRESENTATIONS**

**10:30 AM - BUSINESS MEETING & BOARD ELECTIONS BY BALLOT**

**12:00 PM - EATS**

**BRATS, HOT DOGS, POTATO SALAD, FIXIN'S  
GAMES & ACTIVITIES, BRING THE FAMILY!**

**SPECIAL GIFT FOR MEMBER ATTENDEES**

## **FISH CONSUMPTION ADVISORY**

The Minnesota DNR has a fish consumption advisory in place for both North Long and Round Lakes. This advisory applies to all lakes statewide, though some lakes have additional advisories.

Men, boy age 15 and over, and women not planning to become pregnant, the DNR recommends no more than one serving per week of Bass, Walleye, Catfish, or Northern Pike. For pregnant women, women who may become pregnant, and children under age 15, the DNR recommends no more than one serving per month of Bass, Walleye, Catfish, or Northern Pike. There is no advisory for Crappies and Sunfish.

Full information at <https://www.health.state.mn.us/communities/environment/fish/index.html>





# NORTH LONG LAKE *371 Bay Boat Parade*

**JULY 4<sup>TH</sup>, 2024,  
BEGINNING AT 4PM  
DECORATE YOUR BOAT  
AND GATHER AT THE  
SOUTH SIDE OF  
THE 371 BAY**



A TAILORED  
ARCHITECTURAL  
EXPERIENCE

www.marka.design  
218-232-6031

5411 LAKERS LANE, SUITE 204 | NISSWA, MN 56468

**myCub**  
rewards

All new!

**pickup & delivery**

**Cub**

earn fuel rewards

exclusive digital coupons

only at cub.com



# North Long Lake Boat Access on Hwy 371

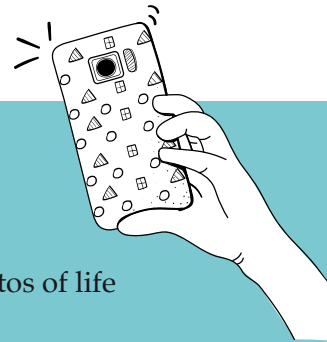
The Minnesota Department of Natural Resources has identified more than 40 public water access sites throughout the state for extensive upgrades; smaller-scale improvements to more than 75 additional accesses are also anticipated. The work is part of the once-in-a-generation Get Out MORE (Modernize Outdoor Recreation Experiences) investments approved by the legislature and signed by Governor Tim Walz in 2023.

Included in this program is the Hwy 371 boat ramp on North Long Lake. More details will be shared as they become available. We expect at least part of the project will include deepening the ramp.



## North Long Lake - Call for Photos!

We're all looking forward to our annual meeting and picnic. And we want to have a killer slide show for our meeting. So please send your photos of life on the lake to [northlong.photos@gmail.com](mailto:northlong.photos@gmail.com)



**3<sup>RD</sup> GENERATION  
FAMILY OWNED**



**WASTE PARTNERS INC**

**BETTER PRICING • BETTER SERVICE  
BEST VALUE**

**218-824-8727**  
[www.wastepartnersinc.com](http://www.wastepartnersinc.com)

**Online & Auto Pay Available  
ACH Payment Discount**

Baxter, Brainerd, Gull Lake, Lakeshore, Merrifield,  
Nisswa, North Long, Round Lake, Pillager



**FASTEST GROWING WASTE  
COLLECTION BUSINESS IN "THE  
LAKES AREA"**



**MATTSON  
LUMBER  
COMPANY**

**Quality Materials  
To Serve You Better**

**We carry a full line of  
building materials for all  
your construction needs.**

Marvin Windows ~ Acclimated Doors & more!

**FREE ESTIMATES • FREE DELIVERY**

Mon.- Fri. 7am - 5pm  
**3 MILES SOUTH OF NISSWA ON HWY 371**

218.963.7470 | Fax 218.963.7480  
Hwy. 371 South, P.O. Box 149  
Nisswa, Minnesota 56468





# North Long Lake Membership

Patrick Schiller-Michels

The number of paid memberships for 2024, as of April 30th, 2024, is 363. 225 also contributed to the AIS fund. This is down from our peak of 401 memberships.

NLLA Membership continues to be on a calendar year basis – January through December. Our dues letter was mailed in late January, along with a stamped, self-addressed return envelope. If you didn't receive yours, please send an email [treasurer@northlong.org](mailto:treasurer@northlong.org) with your name, lake address, and mailing address.

**As always, only members will be eligible to vote in July.  
So if you do not renew by then, you won't be able to vote.**

## DONOR

Adams, Joel & Corrine	Eisenschenk, Keith & Brenda	Junker, Donna	Miller, Geoffrey & Sharon
Albertson, Ryan & Tonya	Elliott, Mike & Mary Jo	Kiefner, Linda	Miller, Jean
Albrecht, Alan & Susan	Esser, Jack & Stephanie	Kiley, Michael & Janice	Miller, Tom & Julie
Albrecht, Chuck & Deb	Fehrmann, Bobbi & Joshua	Kirsch, Mark & Kimberly	Moody, Roger & Karen
Amundson, Shane	Filipkowski, James & Bertha	Knooihuizen, Paul	Morris, Ardis
& Kimberly	Fischer, Randy &	& Deborah	Mortier, John & Loretta
Anderson, Jim & Mary	Kay Olson-Fischer	Knopik, Char & Chuck	Motz, Craig & Lisa
Anglin, Leigh & Marlene	Fisher, Brian & Debra	Koopmeiners, Scott & Debra	Nelson, Donna
Anthony, Dorothy	Flatgard, Barb	Krantz, Jerry & Wendi	Newman, Dennis & Jean
Arneman, John /	Fortney, Paul & Katy	Krohn, Wes & Nicole	Niccum, Paul & Sandra
Bakken, Debra	Fuller, Gene & Jacquelyn	Laak, Steven & Valerie	Nordstrom, Keith & Susan
Arntz, Jonathan & Susan	Gapinski, Gary & Mary	Ladwig, Bill & Julie	Nydegger, Joe & Linda
Athman, Michael & Julie	Gasik, Joseph & Patricia	Lakeside Acres- Kevin	Nygaard, Mary
Backlund, Mary	Gealow, Chuck	Mcmemimen	Obeidzinski, Ron & Sue
Baier, Janice	Genelin, Loren & Sue	Lamp, Judith	Olek, Jeff & Deb
Bauer, Randy & Cindy	Germann, Peter & Elizabeth	Lang, Colleen	Olson, Bob & Peng,
Bebeau, Muriel	Gerrety, Tom	Lanning, James	Doug or Joyce Kraut
Becken, Peter & Jill	Glende, Robert & Becky	& Claudia Aurand	Pater, Lyle & Paula
Beckmann, Lisa & Jim	Goldstein, Harris & Marijo	Laskow, L.T.	Paul & Sherri Raskob
Bengen, Alan & Carol	Graham, Denise & Steve	& Hammer, LeAnne	Peterson, Steve & Brenda
Bennett, Don & Mary Anne	Gregory, Gary & Diane	Lavallee, Cheryl & Dean	Peterson, Tom & Le Ann
Berg, Richard & Debbi	Greve, John & Myra	Leese, Jerry & Sharon	Peterson, Wayne & Leesa
Berg, Steve	Haecker, Mark	Lemieux, Brian & Jacquelyn	Pike, Dan & Sherri
Berg, Thomas & Deborah	Halbur, Gene & Dianne	Lemieux, Ryan & Julie	Piltz, Tyler & Brandi
Betland, Jim & Carrie	Halloran, Michael	Lenz, Dorothy & Richard	Pluth, Patti
Boy Scouts of America	Halva Rob & Judy	Lenzen, Jim & Penny	Polaski, Neil & Shirley
Burley, Robert & Jo Anne	Hammer, LeAnne & Bob	& Arie, Jessica	Popp, Eric & Arby, Lisa
Busch, Darryl & Angela	Hastings, Wade & Karen	Lewis, Tom & Georgette	Potvin, William & Cynthia
Butler, Thomas & Bonnie	Heath, Paul & Lynnette	Lowey, John	Prom, Ervin & Renee
Carey, Paul & Mary	Henkemeyer, Richard	& Sharon Berman	Rahn, William & Nancy
Cash, Craig & Jessie	& Catherine	Marszalek, Robert	Ralph, Stephen & Susan
Cook, Jim & Hopkins, Lynn	Hight, Sara	& Strand, Deborah	Randahl, Greg
Cowan, Robert & Debra	Hill, Kevin & Nancy	Martell, Cody & Amanda	Ransom, Jerry
Cronin, Frances & Patrick	Holewa, Joetta	McCormick, Mary	Reuter, Jerry & Lois
Dalbec, Brian & Barb	Hondo, Lynn & Kay	McDonald, John & Kristil	Reuvers, Gayle
D'Angelo, Michael &	Hradsky, Wes & Joan	McFarlane, Steve & Maria	& Schulz, Chris
Danette	ITLDO Properties LLC	Mcshane, Brian & Bridget	Reuvers, Gayle
Davies, Trudy	Jacobsen, Thomas	Mehr, Tom & Jacki	& Schulz, Chris
Davis, Greg & Jody	Janzen, Warren & Dianne	Mehta, Sengsadeth & Apur	Reyes, Michael & Jenny
Dirks, Tim & Teresa	Jensen, Edward & Jolene	Meier, John & Dana	Ribar, Angela & Scott
Dunivin, Nancy	Johnson, David & Corrine	Meuwissen, Lynn	Richmond, Edmund & Vicky
	Johnson, Greg & Mary	Miland, Lynn & Randall	Riedel, Mark & Tina
	Joyce, Pat & Nancy	Miller, Donald & Jolynn	Ritter, Dale & Lori



Roberts, Walter & Corinne  
 Robertson, Michael & Gail  
 Robinson, David & Sharon  
 Roche, Kevin  
 & Susan Woodwick  
 Rock, Carl & Linda  
 Rolf Engbretson & Liz Pratt  
 Ross, Tim & Diane  
 Royce, Jeff & Jody  
 Ryan, William & Cynthia  
 Sandberg, Bruce & Cindy  
 Scheel, Susan  
 Scherer, Steven & Mary  
 Schiller-Michels,  
 Patrick & Linda  
 Schmidt, Delbert & Nancy  
 Schmidt, William & Fern  
 Schneider, Mark & Janet  
 Schultz, Steve & Julie  
 Shaw, Margaret  
 Shawgo, Bob & Becky  
 Shoberg, Paul & Jewel  
 Sieling, Christopher  
 Smart, Shawn  
 Smith, Michael & Nancy  
 Smith, Thomas & Kimberly  
 Snaza, Lawrence & Marilyn  
 Sobotta, Pat & Karen  
 Southerling, Richard  
 Spear, Richard  
 & Andrea Albrecht  
 Stocking, Pat & Janelle  
 Storms, Charlie & Cathy  
 Strait, Richard  
 Strandberg, Dale & Kathy  
 Strohmayer, Frank & Nancy  
 Swanson, Thomas & Helen  
 Swenson, Mark & Judith  
 Terhaar, Tom & Kathy  
 Thomas, Don & Angie  
 Thorne, Brett & Sara  
 Thorson, Thor & Kimm  
 Thune, Kent & Kathy  
 Thunell, Bryce  
 Thunell, Norman  
 Thunell, Richard  
 Torgerson, Charlie & Lori  
 Trisko, Cheryl &  
 Schoepf, Judy  
 Tuchscherer, Mike & Erika  
 Turcotte, Lance & Karri  
 Turcotte, Richard & Collette  
 Up North INC. DBA  
 Sullivans's Resort  
 Urke, Brandon & Emily  
 Vahey, Michael & Nancy  
 Villwock, Gary & Lola  
 Vinje, Mike & Lisa  
 Vogt, Dave & Nancy

Walls, Billy & Jennifer  
 Wanner, Douglas & Jennifer  
 Wasserburger, Jon & Sue  
 Weaver Family  
 Weiss, Janice  
 Welty, Bruce & Judy  
 Wesch, Scott & Susan  
 Whalen, Charles & Marnie  
 Whitson, Todd & Corrine  
 Wikstrom, George  
 Windjue, Heather & Rodney  
 Wodicka, Jeffrey & Julie  
 Wright, Sandra  
 Wynn-Pratt, Aimee Ellen  
 Yeager, Tom & Lora  
 Young, Charles & Margaret  
 Young, Rich & Marcia  
 Zander, John & Sandra  
 Zelenak, Bob & Diane

### MEMBERS

6104 Birchdale LLC  
 Above All Properties LLC  
 Alderman, Gary & Lynnette  
 Anderson, Dan & Marcie  
 Anderson, Tonia & Nick  
 ARCE Properties LLC  
 Aubart, Mary Kathryn  
 Becker, Steve & Claudia  
 Bentler, Kenneth & Heather  
 Borowicz, Jerome & Renee  
 Buckingham,  
 Rod & Deemaris  
 Bye, Brad & Pat  
 Carlson, Steve  
 & Lisa Hentges  
 Chandler, Tom & Valerie  
 Christensen, Perry & Ann  
 Conn, Phillip  
 & Charissa Morris-Conn  
 Connor, Jim & Sue  
 Corrigan, Shannon & Kerry  
 Cowan, Tamara  
 Cozy Cabin Resort  
 Dale, Milton & Karen  
 Dalos, John & Deborah  
 Degen, Michael & Julie  
 Driscoll, David & Kim  
 Duerr, Josh & Shawn  
 Elfelt, Larry & Corinne  
 Eliason, Jacob & Bonnie  
 Feriancek, Jerry & Rose  
 Gabbert, Shon & Jacqueline  
 Garske, Tina  
 Gerrety, Ed, Carl & Nancie  
 Gilbertson, Larry  
 & Jenelle Thelen  
 Goeritz, Robert

Goslin, Judie  
 Graybill, Jeffery,  
 Daniel & Joseph  
 Greiling, James & Wendy  
 Griego, Kristie & Edwin  
 Grommesch, Alan & Jackie  
 Grubish, Charles & Susan  
 Hagelberger,  
 Roxanne & Steve  
 Hagen, Dan & Patty  
 Hague, Robert & Margaret  
 Hansen, Alan & Barbara  
 Hansen, Ed & Judy  
 Hartup, Grant  
 Hendel, Carolyn  
 Hewitt, Richard & Jenelle  
 Hidden Paradise Resort  
 Hill, Eric & Quigley, Patricia  
 Holm, David, Dustin,  
 Lindee, Dianne  
 Honerbrink,  
 Sandra & Donald  
 Hoppes, James & Lois  
 Hultgren, Martha & Richard  
 Hunter, James & Teri  
 Jensen, Andrew & Rebecca  
 Jensen, Nate & Laura  
 Johnson, Dan & Bonnie  
 Johnson, Jeremy & Sarah  
 Johnson, Timothy & Jody  
 Jorgensen, Karl & Gina  
 Juntunen, Bill  
 Kasmirski, John & Annissa  
 Kasmirski, Thomas & Cindy  
 Kennedy, Kenneth & Joan  
 Kerzman, Scott & Shelly  
 Knese, John & Jenny  
 Knock, Kelly & Linda  
 Knooihuizen, Sandra  
 Kobluk, Calvin & Gina  
 Korentayer, Elisa  
 & Chris Klein  
 L & M North Long Lake LLC  
 Langley, Greg & Sandra  
 Larson, Vicki  
 Laudenbach, Joe & Denise  
 Legionville School,  
 Safety Patrol  
 Lindquist, June  
 Lobitz, Lyle & Mary  
 Loney, Al & Sandy  
 Loomer, Ronald & Theresa  
 Lopez, Jose & Kristen  
 Maroney, Dave & Mary  
 Marshik, Judith  
 Masterson, Aaron & Sarah  
 Medeck, Art & Linda  
 Meier, Marsha  
 Messing, Diane

Miller, Michael & Angie Teig  
 Minke Family  
 Molin, Conrad & Marlene  
 Morris, Mark & Patricia  
 Narlock, Nancy & James  
 Oberhamer, Mark & Linda  
 Olejnicak, Michael & Janice  
 Orth, Mark & Lisa  
 Owen, Robert & Karen  
 Pavek, Thomas  
 Pearson, Charles & Marva  
 Plamann, Patrick & Joy  
 Plate, Paul & Sheryl  
 Pollreis, Jeffrey & Lisa  
 Popp, Timothy & Vicki  
 Prentice, Jerry & Tamra  
 Puffer, Chuck & Lana  
 Purpur, Steve & Doreen  
 Rajkowski, Tim & Gloria  
 Reclusado, Alexander  
 & Avery  
 Reuvers, Gregg & Jamie  
 Ricke, Jerilyn Trustee  
 Roach, Erin & Tucker, Brian  
 Robison, Mark & Josephine  
 Ross, John & Laura  
 Rueckert, Craig  
 Schiffler, Michael & Lori  
 Schultz, Nicholas & Alexis  
 Shipman, Daniel & Nancy  
 Skirka, Mary  
 Smith, James & Cheryl  
 Smyrski, John & Meg  
 Spooner, Robert & Laura  
 Springer, Hugh & Joni  
 Springer, Hugh & Joni  
 Staley, Dan & Morgan  
 Steinhoff, Leroy & Sue  
 Stockinger, Mark & Janet  
 Streeter, Thomas & Cynthia  
 Stroschein, Marvin & Sharon  
 Swanson, Lori  
 Thompson, Rodney  
 Tomczik, Todd & Debra  
 Torborg, Gary & Char  
 Tuchscherer Brothers LLC  
 Villwock, Mike & Barbara  
 Waagmeester,  
 Joshua & Crystal  
 Wagnild, David & Wendy  
 Weber, Michael & Debra Lee  
 Weiland, John & Judy  
 West, Susan  
 Wicklund Family Trust  
 Woelfel, Timothy & Gail  
 Yarmon, Pete & Jane



11:18 AM  
05/02/24  
Cash Basis

North Long Lake Association  
Balance Sheet by Class  
As of April 30, 2024

	Ais Fund	Emergency Re...	General Fund	Walleye Fund	Un...	TOTAL
<b>ASSETS</b>						
Current Assets						
Checking/Savings						
MMFCU 13 Month CD apy 5...	0.00	51,513.16	0.00	0.00	0.00	51,513.16
MMFCU 7 Month CD apy 4...	0.00	0.00	20,526.92	0.00	0.00	20,526.92
MMFCU Savings	0.00	0.00	5.00	0.00	0.00	5.00
NLLA Checking	16,587.55	0.00	41,466.42	600.00	0.00	58,653.97
<b>Total Checking/Savings</b>	<b>16,587.55</b>	<b>51,513.16</b>	<b>61,998.34</b>	<b>600.00</b>	<b>0.00</b>	<b>130,699.05</b>
Other Current Assets						
12000 · Undeposited Funds	0.00	0.00	-35.00	0.00	0.00	-35.00
<b>Total Other Current Assets</b>	<b>0.00</b>	<b>0.00</b>	<b>-35.00</b>	<b>0.00</b>	<b>0.00</b>	<b>-35.00</b>
<b>Total Current Assets</b>	<b>16,587.55</b>	<b>51,513.16</b>	<b>61,963.34</b>	<b>600.00</b>	<b>0.00</b>	<b>130,664.05</b>
<b>TOTAL ASSETS</b>	<b>16,587.55</b>	<b>51,513.16</b>	<b>61,963.34</b>	<b>600.00</b>	<b>0.00</b>	<b>130,664.05</b>
<b>LIABILITIES &amp; EQUITY</b>						
Equity						
32000 · Retained Earnings	5,980.03	50,000.00	51,366.02	0.00	0.00	107,346.05
Net Income	10,607.52	1,513.16	10,597.32	600.00	0.00	23,318.00
<b>Total Equity</b>	<b>16,587.55</b>	<b>51,513.16</b>	<b>61,963.34</b>	<b>600.00</b>	<b>0.00</b>	<b>130,664.05</b>
<b>TOTAL LIABILITIES &amp; EQUITY</b>	<b>16,587.55</b>	<b>51,513.16</b>	<b>61,963.34</b>	<b>600.00</b>	<b>0.00</b>	<b>130,664.05</b>



24428 SMILEY ROAD  
NISSWA MN  
Toll free | 800-322-3525  
Web | NISSWADOCK.COM



11:14 AM

**North Long Lake Association  
Statement of Financial Income and Expense  
January through April 2024**

05/02/24

Cash Basis

	Ais Fund	Emergency Res...	General Fund	Walleye Fund	TOTAL
<b>Income</b>					
AIS 2024	10,690.00	0.00	0.00	0.00	10,690.00
CD Interest	0.00	1,513.16	526.92	0.00	2,040.08
Interest Inc	0.00	0.00	32.09	0.00	32.09
Membership 2024 memorials	0.00	0.00	12,700.00	0.00	12,700.00
Walleye Fund	0.00	0.00	30.00	300.00	330.00
			0.00	300.00	300.00
<b>Total Income</b>	<b>10,690.00</b>	<b>1,513.16</b>	<b>13,289.01</b>	<b>600.00</b>	<b>26,092.17</b>
<b>Gross Profit</b>	<b>10,690.00</b>	<b>1,513.16</b>	<b>13,289.01</b>	<b>600.00</b>	<b>26,092.17</b>
<b>Expense</b>					
Curly Leaf Treatment	82.48	0.00	0.00	0.00	82.48
Insurance	0.00	0.00	550.00	0.00	550.00
Membership Drive Printing & Pos	0.00	0.00	1,519.69	0.00	1,519.69
Membership Dues	0.00	0.00	100.00	0.00	100.00
Minnesota Lakes and Rivers	0.00	0.00	500.00	0.00	500.00
Property Tax	0.00	0.00	22.00	0.00	22.00
<b>Total Expense</b>	<b>82.48</b>	<b>0.00</b>	<b>2,691.69</b>	<b>0.00</b>	<b>2,774.17</b>
<b>Net Income</b>	<b>10,607.52</b>	<b>1,513.16</b>	<b>10,597.32</b>	<b>600.00</b>	<b>23,318.00</b>

*Protect your health!*

**Test your water well for:**

- Manganese** (before a baby drinks the water)
- Coliform Bacteria** (every year)
- Nitrate** (every year)
- Arsenic** (at least once)
- Lead** (at least once)

**Testing is even more important if young children drink the water.**

Recommendations from the Minnesota Department of Health.



**AW research laboratories**

218-829-7974 • www.awlab.com



WHATEVER IT TAKES

**Small town service.  
Big city quality.**

Professional design, printing and mailing services in the Brainerd lakes area.

218-829-7790 • info@lakesprinting.com • lakesprinting.com





**DIGITAL HORIZONS**

Providing the best in **smart home technology, home entertainment,** and **security systems** for the Brainerd Lakes and surrounding areas



COME SEE FOR YOURSELF  
**SHOWROOM/EXPERIENCE CENTER**  
 1924 S. 10TH STREET, BRAINERD

**DIGITALHORIZONSMN.COM** 218-330-4140





**2nd Annual Fourth of July Round Lake Boat Parade**  
*Decorate your watercraft and join the fun!*

**11 AM | Meet at the NE corner of the lake to parade around Round**

If you can't parade, please wave as the creative boats float by.  
 We'd love to see you by lake or shoreline. - Round Lake Association



24142 Smiley Rd  
 Nisswa MN 56468  
 218-454-1065

backyardmn.com  
 info@backyardmn.com  
 877-365-4034





# Round Lake Fisheries Report

By Mike Knapp

Round Lake is stocked annually with 627,000 (1,000/ littoral acre, at least 15 feet deep) walleye fry from the DNR hatchery in Brainerd. Walleye fry are stocked within a day of hatching because they only have a few days of food available in their yolk sac until they switch to eating plankton. Fisheries staff take the fry, which are the size of mosquito larvae, in camp water jugs out to the deeper part of the lake so they will be away from the shoreline predators when they release them. Whether the walleye fry are successful or not depends on a variety of factors including water temperature and timing of when fry are stocked relative to when the plankton, their food source, becomes available in the lake.

It takes about 3 years for the walleye fry to grow into a 12 to 13-inch fish. Each fall they do a survey to find out how successful the stocking was. They use an electrofishing boat, which emits a current through the water. The fish are temporarily stunned so they can capture them and measure them. If the catch is less than 15/hour two years in a row, they would do a contingency fingerling stocking in the fall. They would stock 4-7 inch walleye fingerlings harvested from rearing ponds in the area or purchased from private aquaculture vendors. The Walleye Alliance has also contributed to these contingency stockings by purchasing and stocking walleye fingerlings.

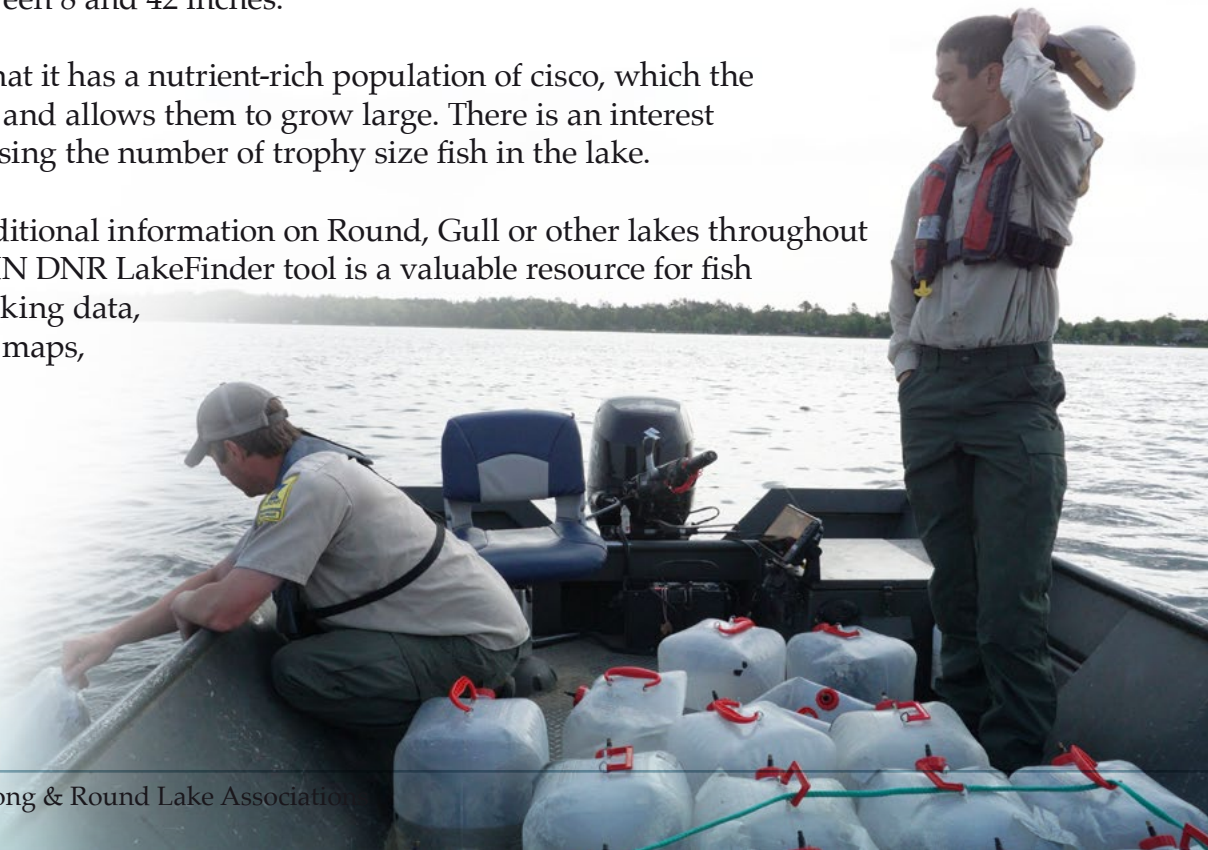
Every third year the DNR does a summer gill net survey in Round Lake. In 2022, they found 7.3 walleye/gill net between 9 and 28 inches with an average of 16.7 inches. Round also has the potential for some very nice northern pike and as such, the DNR has modified the 30" minimum on Round to match the experimental regulation for the Gull Lake Chain of Lakes (including Round Lake) that requires all northern pike between 30 and 40 inches be immediately released. The regulation also changes the possession limit to 2 with only 1 over 40 inches allowed in possession.

Local fisheries staff did a northern pike survey in 2001, 2013 and 2023 just after ice out. They set trap nets at the Hole-in-the-Day culvert because northern pike spawn there in the spring. They want to track over time the number of fish over a larger size threshold in Gull Lake. They measured and clipped the fin of 2,175 northern pike between 8 and 42 inches.

Gull Lake is unique in that it has a nutrient-rich population of cisco, which the northern pike like to eat and allows them to grow large. There is an interest in maintaining or increasing the number of trophy size fish in the lake.

For those looking for additional information on Round, Gull or other lakes throughout the area and state, the MN DNR LakeFinder tool is a valuable resource for fish survey information, stocking data, fishing regulations, lake maps, and more.

Check it out at  
[www.dnr.state.mn.us/lakefind/index.html](http://www.dnr.state.mn.us/lakefind/index.html).





# Round Lake Improvement Association (RLIA) and Round Lake Improvement District (RLID) Board Vacancies

This year the Round Lake Improvement Association and the Round Lake Improvement District have 4 board openings: Ann Kalgren, Bob Carter, Luke VanderAarde and Michael Haarstad have completed their terms. The RLIA/RLID would like to thank each of them for their commitment to the organization and all of their work and wish them all the best in the future. We are happy to announce that Ann, Bob and Michael have agreed to another term.

It should be pointed out that the Annual Picnic/Meeting on June 15, 2024 is for both the RLIA and the RLID. In accordance with Minnesota statutes, lake improvement districts must open their board elections and annual meetings to all property owners. In addition, provisions must be made for the casting of ballots for those not able to attend the annual meeting. Candidates who have agreed to accept nominations are listed on the ballot, and we will accept write-in candidates. The current board members thank those on the ballot for offering their services to our association/district.

Mail-in ballots must be received by June 12, 2024.

Please remember, it is one vote per property, not one vote per person. Be sure to include your address so we can validate your ballot. Additional nominations for board positions will be accepted from Round Lake property owners at the annual meeting. However, please obtain prior approval from the nominee if they will not be in attendance.

## Round Lake Association/Round Lake Improvement District **BOARD MEMBER BALLOT**

**VOTE FOR 4:**

Ann Kalgren     Michael Haarstad     Bob Carter     Phyllis Trcka

Write-in Candidate: \_\_\_\_\_

Write-in Candidate: \_\_\_\_\_

Voter's Name \_\_\_\_\_

Lake Address \_\_\_\_\_ Phone \_\_\_\_\_

Signature: \_\_\_\_\_

**Mail to:**

**Round Lake Ballot | PO Box 378, Nisswa, MN 56468**



## ROUND LAKE IMPROVEMENT ASSOCIATION

## Membership Levels

Contributions Received 4/9/23 thru 4/30/24

**OWL \$25 - \$49.99**

Burton, Chuck & Sandy  
 Calder/Malone, Tom & Sheryl  
 Crail/Parker, Dick & Lynn  
 Durrenberger, Lynn  
 Graphenteen, Marian  
 Hastings, Tim & Darlene  
 Hayes, Sandra  
 Houle, Bob & Pam  
 Husby, Paul & Bethany  
 Lofgren, Mona  
 Ludenia, Bill & Kathy  
 Meyer, David & Becky  
 Nygren, Greg & Bonnie  
 Olson, Suzette  
 Rawlings, Randy & Mary Sue  
 Rogers, Ted & Mary  
 Ronlund, Linda  
 Sparks, Dennis & Jayne  
 Trocke, Dean & Paula  
 Woessner, Don & Mary Kay

**HAWK \$50 - \$74.99**

Arndt, Bill & Jean  
 Baxter, Tim & Nancy  
 Bell, Bud & Cindy  
 Bonestroo/DuFour/Morain, Jo/  
 Sally/Nan  
 Borchert, Shane & Wendy  
 Carter, Bob & Kathy  
 Christensen, Robert & Blanca  
 Cibuzar, Shellie  
 Colby, Steve & Kristi  
 Devlin, Jack & Suzanne  
 Eckroad, Aaron & Janet  
 Esser, Steve & Linda  
 Fisher, Scott & Sue  
 Frazer, Deb  
 Gatz, Dale & Debra  
 Goers, Bill & Vicky

Golde, Jason & Jamie  
 Holmen, Karen  
 Howard, Barb  
 Jacks, Nancy  
 Juhlke, Cliff & Meme  
 Keller, Daniel & Sarah  
 Langham, Jim & Anita  
 Liudahl, Nan  
 Majka, John & Laurie  
 Meyer, John  
 Musielewicz, Bob & Pam  
 Nadeau, Joseph & Sheila  
 Newcomb, Nona  
 Niebur, Michael & Susan  
 Olson, Karen  
 Palmstein/Johnson, Carl & Judith  
 Patnode, Mark & Stacy  
 Peterson, Craig & Karen  
 Plutowski, Dale & Judy  
 Radintz, Paul & Diane  
 Rhoades, Butch & Jan  
 Sauro, Michael  
 Snyder, Deborah  
 Springer, Shirley  
 Thelen, Molly  
 Wernberg, Kevin & Kathy  
 Wrede, Bob & Ann  
 Zard, Clark & Kathy  
 Zauhar, Mike & Ruth

**OSPREY \$75 - \$99.99**

Allen, Harvey  
 Cooney, Richard & Gayle  
 Friesen, Bruce & Carol  
 Gruber, Jason & Debra  
 Harstad, Glen & Kirsten  
 Heinen, Nick & Pat  
 Hennes, David & Kathleen  
 Kjorlien, Marilynn  
 Norlander, David & Susan

Rusnacko, Bob & Ruth  
 ShanksBruce & Roxane

**EAGLE \$100 OR MORE**

Anderson, Kent & Tammy  
 Anderson, Wes & Lorrie  
 Bahr, Dan & Christi  
 Baker, Bill & Peg  
 Bardwell, Kevin & Kimberly  
 Bickel, Lois  
 Bosacker, Pat  
 Bowe, Jim & Susan  
 Brown, Dan & Kathy  
 Burman, Jeff & Lou  
 Carfrae, Steven & Joanne  
 Carnahan, John & Cindy  
 Carpenter, Michael & Tina  
 Cerre-Ruedisili, Debra  
 Chmielewski, Joe  
 Clough, Steve & Cindy  
 Crew, Judith  
 Cunningham, Bob & Mary  
 Dalzell, Kent & Connie  
 Danielson/Madden, Mark & Linda  
 Davidge, Eric & Julie  
 Dillion, Michael & Kimberly  
 Donovan, Sue  
 Ellingson, Ben & Bette  
 Engelman, Paul & Wendy  
 Erhard, Lee & Irene  
 Etzell, Paul & Mary  
 Falls, Douglas & Marie  
 Flaherty, Scott & Ann  
 Forsberg, Adam & Adele  
 Golebiowski, Andrew & Brigid  
 Grossman, Josh & Ellen  
 Gruenewald, Ralf & Amber  
 Haug, Brian & Randa  
 Hawkinson, Karl & Jamie  
 Holmstrom, Marti & Cassi



Jarabek, Dennis & Janelle  
 Johnson/Kersten,  
 Mark & Katherine  
 Kalgren, Ann  
 Knodt, Matthew & Martha  
 Krause, Norm & Julie  
 Kruchten, Tom & Susan  
 Lahl, Andy & Rebecca  
 Lancaster, Bill & Elaine  
 Larson, David & Cathy  
 Larson, Mike & Ada  
 Larson, Steve & LuJean  
 Lofgren, Laurie  
 Ludtke, Craig & Brenda  
 Lusk, Steve & Kathy  
 Maki, Jim & Diane  
 McDermott, Mike & Tanya  
 MD Vacation Poperties LLC  
 Moore, John & Lourdes  
 Moore, Tom & Kitty  
 Muilenburg, Brent & Allyson

Murphy, Daniel & Kristine  
 O'Brien, Kevin & Peach  
 Oothoudt, Greg & Lisa  
 Panzer, Dennis & Beverly  
 Parrish, Mark & Paula  
 Pawson Properties Lakeside LLC  
 Phillips, Kathie  
 Pritchett, Russell  
 Quist, John & Marilyn;  
 David & Donna  
 Rasmussen, Alice  
 Richter, Ray & Janice  
 Roach, Richard & Jennifer  
 Roberts, Bernie & Linda  
 Rudlang, Schabne & Alisa  
 Ryan, Thomas & Theresa  
 Schafer, Mike & Carol  
 Schmitt, Scott & Stacey  
 Sebago Resort  
 Skogquist, Allen & Alycia  
 Smith, Ken

Soma, Jeff & Barb  
 Swanson, John  
 Thompson, Jeff & Kim  
 Trcka, Scott & Phyllis  
 Ubl, Stefanie & Kaitlin  
 Upgren, Stephen & Kathie  
 Vander Aarde, Luke & Lanette  
 Veldman, Jake & Sarah  
 Veldman, Jeri  
 Veldman, Mike & Deb  
 Waagmeester, Terry & Vickie  
 Waldron, Jerry & Nikki  
 Welch, Martin & Jennifer  
 Wickham, Corey & Laura  
 Wiegand, Tom  
 Wilcox, Charles & Virginia  
 Wild, Jordon & Kimberly  
 Womeldorf, Dale & Cathy  
 Yaeger, Dave & Tina  
 Yaeger, Geary & Mary Kay  
 Yasser, Ali & Shannon  
 Zager, Michael & Vicki

# MEMBERSHIP RENEWAL

ROUND LAKE IMPROVEMENT ASSOCIATION – 2023/2024

It is that time of the year to renew your membership in our association. Since our fiscal year runs from July 1 to June 30, membership will be for the same time period. In the past, some members have renewed on a calendar year basis. For the sake of simplifying our record keeping, we are asking all members to renew at this time of the year. We will no longer have a membership renewal article in our fall newsletter.

**Beginning July 1, 2024 our membership categories are as follows:**

**Owl \$25 - \$49.99 | Loon \$50 – \$74.99 | Hawk \$75 – \$99.99 | Osprey \$100-\$199 | Eagle \$200 or over**

All contributions will be acknowledged in our newsletter. If you have a question regarding your membership payment, please contact Sue Donovan, 952-292-9746 or [sdono@live.com](mailto:sdono@live.com)

## RLIA - WORKING FOR YOU - FOR A BETTER ENVIRONMENT

Please make checks payable to: Round Lake Improvement Association, P.O. Box 378, Nisswa, MN 56468

Name \_\_\_\_\_

Lake Address \_\_\_\_\_

Other Address \_\_\_\_\_ City, State, Zip \_\_\_\_\_

Home Phone \_\_\_\_\_ Lake Phone \_\_\_\_\_ Cell \_\_\_\_\_

Email Address \_\_\_\_\_



# Round Lake Improvement District | For the Period of 1/1/2023 - 12/31/2023

Cash Balance as of 1/1/2023	\$145,446.44	Description
Revenues:		
	\$6,077.69	Interest
Total Revenues	\$6,077.69	
Expenditures:		
	\$2,204.00	MCIT insurance
	\$250.00	LID Annual Admin Fee
	\$280.00	Summer TSI analysis AWR
	\$929.00	Sugar Bush Creek Sampling
	\$960.00	Curly Leaf Pondweed survey
Total Expenditures:	\$4,623.00	
Cash Balance as of 12/31/2023	\$146,901.13	
CD	\$(141,040.79)	
Checking Acct Balance	\$5,860.34	

## Round Lake Improvement Association, Inc.

Account Balances As of 4/30/24

Account	6/30/23 Balance	12/31/23 Balance	4/30/24 Balance
<b>Bank Accounts</b>			
CD First Western 403596	\$36,426.95	\$44,691.46	\$44,691.46
Checking	\$13,974.01	\$5,379.82	\$5,839.54
Savings	\$18,305.48	\$29,837.80	\$29,862.75
<b>TOTAL Bank Accounts</b>	<b>\$68,706.44</b>	<b>\$79,909.08</b>	<b>\$80,393.75</b>
<b>Asset Accounts</b>			
Accounts Receivable	\$100.00	\$0.00	\$0.00
Total Asset Accounts	\$100.00	\$0.00	\$0.00
<b>Liability Accounts</b>			
<b>TOTAL Liability Accounts</b>	<b>\$0.00</b>	<b>\$0.00</b>	<b>\$0.00</b>
<b>OVERALL TOTAL</b>	<b>\$68,806.44</b>	<b>\$79,909.08</b>	<b>\$80,393.75</b>



ALL ORDERS  
MUST BE PLACED  
BEFORE  
6/30/24

# ROUND LAKE

ASSOCIATION STORE

[WWW.THETEELHIVE.COM/STORES/ROUNDLAKE](http://WWW.THETEELHIVE.COM/STORES/ROUNDLAKE)



ROUND LAKE WOMENS V-NECK  
\$20.00



ROUND LAKE T-SHIRT  
\$20.00



BUFFALO PLAID 50"X60" FLEECE BLANKET \$50.00



LAKE LIFE SWEATSHIRT  
\$50.00



FISH SWEATSHIRT  
\$50.00



ROUND LAKE CREWNECK  
\$40.00



ROUND LAKE LONG SLEEVE  
\$30.00



R112 CHARCOAL/BLACK  
\$20.00



R112 HEATHER GREY/ROYAL  
\$20.00



VC300 KHAKI  
\$20.00



VEST  
\$60.00



Round

North Long

# LAKE ASSOCIATIONS

North Long Lake Association Inc.  
PO Box 54  
Merrifield, MN 56465

