



Round

North Long






SANCTUARY RIDGE



Positive
REALTY



Nelson Torfin Hayes
REAL ESTATE GROUP

- Maintenance free homes starting at \$480K
- Single family wooded lots starting at \$65K
- Convenient location off The Pine Beach Rd.

info@lakehome.com

218.270.4032

www.lakehome.com/SanctuaryRidge

**ROUND LAKE
BOARD OF DIRECTORS**

PRESIDENT | Terry Waagmeester
SECRETARY | Jennifer Carnahan
TREASURER | Sue Donovan
PAST PRESIDENT | Mark Parrish

BOARD MEMBERS

Bob Carter
Linda Esser
Scott Fisher
Michael Haarstad
Ann Kalgren
Phyllis Trcka

e-mail comments or concerns to:
Roundojibwa@gmail.com
Website: Roundlakebrainerd.com

**NEWSLETTER EDITOR
(Round Lake)**

Phyllis Trcka
Phyllistrcka76@gmail.com | 507-273-2272

**NORTH LONG LAKE
BOARD OF DIRECTORS**

PRESIDENT | Harris Goldstein
(Merrifield Bay) • harris.goldstein@northlong.org
VICE PRESIDENT | Open
SECRETARY | Martha Weaver West
(371 Bay) • Martha.west@northlong.org
TREASURER | Patrick Schiller-Michels
(371 Bay) • patrick.schiller-michels@northlong.org

BOARD MEMBERS

Alan Albrecht (Merrifield Bay)
alan.albrecht@northlong.org

Garry Kahle (Big Lake)
Garry.Kahle@northlong.org

Sandy Loney (371 Bay)
Sandy.Loney@northlong.org

Mary McCormick (Big Lake)
mary.mccormick@northlong.org

Bill Schmidt (Big Lake)
bill.schmidt@northlong.org

Becky Shawgo (Big Lake)
becky.shawgo@northlong.org

Rod Windjue (371 Bay)
rod.windjue@northlong.org

**NEWSLETTER EDITOR
(North Long Lake)**

Harris Goldstein
harris.goldstein@northlong.org

CONTENTS

President’s Message | North Long Lake2
North Long Lake Ice In/Out and Lake Levels2
President’s Message | Round Lake 4
A Decade of Success at Risk6
Starry Trek 2025.....7
Navigation Buoys8
Support the DNR9

**NEWS AND NOTES FROM
NORTH LONG LAKE**

Chuck Knopik.....9
Interim Board President9
AIS Committee.....10
Walleye, Walleye Where Art Tho 11
Spring Highway 371 Litter Pickup12
Annual Meeting and Picnic12
Water Structure Permits13
Test Your Well for Nitrates13
North Long Lake Association Board of Directors Vacancies.....13
Annual Dues Letter has Been Mailed.....13
Wakeboard Boating.....14
Moving docks, lifts, and equipment to another waterbody? 14
“Trust, but Verify”15
Youth Watercraft Operators Permit Class15
North Long Lake Membership Report.....16
Treasurer’s Report18

**NEWS AND NOTES FROM
ROUND LAKE**

Spring 2025 Round Lake Walleye and
Northern Pike Fishing Report..... 20
Annual Meeting and Summer Picnic 21
Sale Around Round is Back in the Spring 21
2025 Artificial Loon’s Nest Report..... 21
RLIA & RLID Board Vacancies22
Round Lake Clothing22
Round Lake Membership23
Round Lake Membership Renewal23
Round Lake Financials.....24

President's Message | North Long Lake

Chuck Knopik | President

Happy Spring to all North Long Lake residents and friends.

The birds have returned, we're hearing the loons on the lake, and we're all anxious for more of those beautiful weather days to arrive. In our neighborhood, we're always anxious for the purple martins to return. We really enjoy having them around and they keep the squirrels and other animals on their toes as they swoop down at them. Very fun.

Your lake association board is very busy planning for this summer season. We've been focusing on our approach to AIS, our quickly upcoming Annual Meeting/Picnic, the spring Highway 371 litter pickup and the annual youth boater safety class we sponsor.

We are making a couple of changes to our AIS planning and approach this year. As you may remember, we have not treated Merrifield Bay for curly leaf pondweed the last two years as we did not identify enough of this weed for the DNR to authorize treatment. We have been advised by both of the companies we employ for AIS survey and treatment that there is not enough of this weed present right now to spend money on surveying and treating curly leaf pondweed. We will however be employing these professionals to survey our 3 main lake landings and nearby areas two times this summer to search for any new AIS infestations or changes. Gull Lake and Cross Lake have been using this approach for a couple of years to help identify any infestations or changes as soon as possible.

We will survey for Eurasian water milfoil and fully anticipate needing to treat Merrifield Bay for this invasive

species again this year. We know that the best way to minimize the impact of new invasive species is through early detection and rapid response. In addition, we are planning to spend some money for boat ramp inspections in September (depending on Crow Wing County's availability of experienced inspectors for these days.)

We look forward to seeing many of you at our annual meeting/picnic which will be held on June 7th this year. We know it's not the perfect date but we want to make this gathering as convenient as we can so we are making this change to a June meeting. Bring your neighbors, learn something new and enjoy a great lunch with us.

We have had several retirements from our NLLA Board and we certainly would like to invite you to attend one of our meetings and get involved in our association, possibly as a Board member. We have a great group of people who work very hard to keep our lake healthy. Having said that, I also am informing everyone that I will be leaving the NLLA. We have sold our lake home and are moving closer to our grandchildren. We look forward to this change in our lives, but undoubtedly will greatly miss our friends and the lake. Our new Interim President is Harris Goldstein who is extremely well qualified and experienced. Harris has been an active Board member, and our newsletter editor, for many years and we're very fortunate to have him in this position.

Enjoy your spring and summer. We all know we can't take these beautiful days for granted. Hopefully we'll see many of you on June 7th.

NORTH LONG LAKE ICE IN/OUT AND LAKE LEVELS

The Minnesota DNR reports ice in/out and water level data on the North Long Lake Lakefinder page (<https://tinyurl.com/northlong>). Data for the most previous years has been sparse. To remedy this, volunteers from the North Long Lake Association will be providing ice out and ice in dates to the Minnesota Climatology office and weekly water level readings to the Minnesota DNR.

We do need an additional volunteer to track ice in and out on Merrifield Bay. And a backup for water level readings (the lake level gauge is at the Merrifield boat ramp. If you are interested in volunteering, please send a note to north.long.lake.news@gmail.com.



EVERYTHING IS BETTER

at the Lake



JIM CHRISTENSEN
LAKESHORE MARKETING GROUP

LakeshoreBroker.com
218-820-2147



CALL FOR A COMPLIMENTARY MARKET APPRAISAL OF YOUR PROPERTY

President's Message | Round Lake

Terry Waagmeester | President



Hello fellow Round Lake residents.

Spring has finally arrived! The ice was officially off the lake on April 15th and the activity level is picking up on the lake with the dock services putting everyone's docks and lifts in place. Let's all hope for some good spring rain to re-

place the lack of snow so Bishops Creek remains easily navigable for the summer.

Last year we engaged Lakes Restoration to perform the annual assessment for curly leaf pondweed in early May 2024. They detected minimal growth and did not recommend treatment. However, they did recommend a total lake survey, so we engaged Aquatic Survey Professional to perform an in-depth survey of the lake in mid-June.

Aquatic Survey Professionals did detect the presence of curly leaf pond weed but it was too late in the year to treat. We have contracted with PLM Lake & Land Management to perform the Curly leaf treatment this spring.

We have also contracted with Freshwater Scientific Services LLC to perform two surveys this year. The first survey will be done in April\May to help guide the treatment plan. A follow-up survey will be done after the treatment in May\June to determine the effectiveness. A special thank you to Mark Parrish for coordinating this.

The buoys marking known hazards and the channel to navigate to Gull Lake will be put in place again this year. In addition, this year we plan to add buoys to mark the channel to the boat access. A special thank you to John Just and Luke Vander Aarde for their placement and removal in the spring\fall.

A couple of friendly reminders. Now that the road reconstruction is finally complete, the Sale Around Round will begin again. The sale is scheduled for Saturday June 7th this year. The Annual meeting will be held again this year at the Nisswa Community Center on June 21st starting at 12:00 noon. Please bring your family and enjoy this social event. Both events are a great time to meet or reconnect with some of your fellow Round Lake residents.

A reminder to make your tax-deductible donations to the Round Lake Association. You can find the form and information for making your donation towards the back of this newsletter. The recognition levels were adjusted last year per the chart below.

- 1.) Owl \$ 25 - \$49.99
- 2.) Loon (new level) \$ 50 - \$74.99
- 3.) Hawk \$ 75 - \$99.99
- 4.) Osprey \$100 - \$199.99
- 5.) Eagle \$200 or more

The primary use of the funds collected are to maintain Bishops Creek in a condition that makes navigation between Round Lake and Gull Lake possible. The navigability of the creek is crucial to Round Lake's property Values.

I would again like to thank all the board members and volunteers for their hard work this past year. Be sure to stay connected by checking out our website: <https://www.roundlakebrainerd.com> for more details. Hope to see you all on June 21st.

The Winter Round Lake Apparel Will Arrive Soon.

Our apologies to those who ordered and paid for Round Lake winter apparel and have yet to receive it. We may have missed many interested shoppers with the fall newsletter that arrived after the snowbirds left. We were not able to reach the order numbers to go into production until now. All orders will be honored. Sorry for the delay and be sure to look into the spring collection available in this issue.





4XIS
WAKE RESEARCH

MINNESOTA INBOARD

PROUDLY SERVING LAKE MINNETONKA FOR OVER 30 YEARS



BOAT SALES · PRO SHOPS · SERVICE · MOBILE SERVICE · FIBERGLASS REPAIR
STORAGE · BOAT TRANSPORTATION · CERAMIC COATING



EXCELSIOR | 720 Galpin Lake Rd
BAXTER | 15779 Edgewood Drive
DETROIT LAKES | 259 County Highway 11

MNINBOARD.COM



Pequot Lakes & Annandale
backyardmn.com / 218.454.1065



BACKYARD
REFLECTIONS
We Create Outdoor Dreams

MINNESOTA AIS PREVENTION AID

Since 2014, Minnesota's county Aquatic Invasive Species Prevention Aid (AISPA) has been a game-changer in invasive species prevention, earning national recognition for its efficiency and impact. By directing funds to local governments—those closest to the problem and most motivated to act—AISPA has delivered unmatched results.



Annual Impact

Inspections & Decontaminations ~60%

- \$4.3M invested across 38 counties to hire 600+ inspectors, covering 180,000 hours and 335,000 inspections
- 2,000+ decontaminations at 768 accesses on 625 water bodies
- Local lake associations contributed an additional \$5M for extended inspection hours

Control & Rapid Response ~25%

- \$2.5M spent annually on control & rapid response, leveraging an additional \$587K from lake organizations for invasive plant management
- AIS surveys conducted on 641 lakes, with management actions taken on 187 water bodies

Education & Outreach ~8%

- \$350K spent on public education campaigns with nearly 13,500 children taught about AIS throughout close to 300 events.
- Outreach included 500 social media posts seen by nearly 200,000 followers and the *How Well Do You Know MN?* AIS video series that received over 1 million impressions.

Local investments:

AISPA is Minnesota's most effective local prevention effort. Beyond the annual funds, AISPA leverages an additional \$6.2 million in local contributions and 1.2 million volunteer hours from lake associations every year.

Stopping the Spread:

Minnesota has dramatically slowed AIS spread, outperforming other states. In Michigan, starry stonewort (*Nitellopsis obtusa*) infested nearly every inland lake in the Lower Peninsula within a decade—but in Minnesota, only 30 lakes have been affected in the same timeframe.

Powerful Partnerships:

The AISPA is one of the most exciting examples for the power and cost effectiveness of public/government partnerships. Counties report metrics while working directly with local and engaged stakeholders.

Protecting our Water Legacy

Every dollar spent on prevention saves \$100 in future management costs. AISPA has enabled local governments to establish long-term prevention plans, securing Minnesota's waterways and saving billions in future management costs.



Jeff Forester, Executive Director
612-961-6144
jeff@mnlakesandrivers.org

MINNESOTA LAKES AND RIVERS Minnesota's AIS Prevention Aid:

A Decade of Success at Risk

For the last ten years, Minnesota has led the nation in preventing the spread of aquatic invasive species (AIS) through the Aquatic Invasive Species Prevention Aid program. Established in 2014 with the support of Minnesota Lakes and Rivers Advocates, this program allocates \$10 million annually to local governments, empowering them to implement targeted, science-based solutions to protect our lakes and rivers.

However, the 2025 Governor's budget recommendation proposes reducing this vital program by 50% and phasing it out entirely by 2029. Such cuts could significantly weaken our ability to prevent new AIS introductions, leading to increased long-term costs for lake associations, property owners, and local governments.

This funding has played a critical role in maintaining Minnesota's reputation as a leader in AIS prevention and management. County-led initiatives have successfully

increased public awareness, strengthened watercraft inspection and decontamination efforts, and fostered local partnerships to combat invasive threats like zebra mussels, Eurasian watermilfoil, and starry stonewort. The results speak for themselves—communities across the state have leveraged these funds to safeguard the health of their waters, ensuring that future generations can enjoy Minnesota's cherished lakes and rivers.

To highlight the importance of this funding, we have put together a one-page flyer detailing the positive impact AIS Prevention Aid has had over the past decade. We encourage you to share it with your friends, family, and colleagues—anyone who values clean, healthy waterways. By raising awareness, we can ensure that this essential program continues to protect Minnesota's lakes and rivers for years to come.

MINNESOTA AIS RESEARCH CENTER

WHAT YOU'LL DO:

HOW YOU'LL MAKE A DIFFERENCE:

Watch our emails for more news as we get closer to the event.

Navigation Buoys

As most of us know, the channel between the main lake and 371 Bay is very shallow. We've had a number of inquiries about the feasibility of placing navigation buoys where that channel is deepest. Green and Red buoys are used to mark where the channel is safe to navigate through. They also warn boaters not anchor between those markers.

It's important to note that the channel is very shallow all across from north to south. At best, the deepest section is just a few inches deeper than the rest of that channel. And, depending on water level, the deepest section may still be too shallow for a typical fishing boat or pontoon to motor through with its lower unit down. This has been the case for the last few years.

Placing the buoys there would be permissible, with a permit from the Crow Wing County Water Patrol. We believe they would approve that permit as long as we used approved buoys.

But there are a few obstacles:

- Liability – Navigation buoys are intended to mark where it's safe to boat. There may not be any area where you can safely proceed with your motor's lower unit down. We are investigating whether our association may have any liability and well as any impact on our insurance coverage.
- Placement – It's difficult to know exactly where the channel is deepest. We'd have to find that spot every spring and it could change slightly year to year. And, as mentioned earlier, while one spot may be slightly better than another, there is no spot that is really safe. Without a safe navigation channel, marking a channel is pointless. And marking a channel may mislead boaters into thinking the channel is safe.
- Volunteers – The buoys would have to be put out in the spring and removed in the fall. It's not terribly difficult, but we would need volunteers in the spring and fall to do that. And possibly mid-season if water levels change significantly.
- Boater knowledge – We don't believe that many, or possibly most, Minnesota boaters know the navigation rules in order to comply with the buoys. But this is something we can work on.

We are looking closely at this and will proceed if we are comfortable that there is not financial risk to the association, it is both useful and safe for boaters, and we have the resources to place, maintain, and remove the buoys.



We Need Your Help To Welcome New Neighbors

We are planning to meet and give a Welcome Bag to new property owners with some useful information regarding North Long Lake.

Please let us know if you have any new neighbors. Just send us a note with their name, phone number (if you have it), and lake address. Or if you prefer, ask them to send us a note. Either way, the note can be sent to north.long.lake.news@gmail.com.



Support the DNR's Proposal to Increase AIS Surcharge and Fund Local AIS Grants

(Courtesy of Minnesota Lakes and Rivers)



Lake associations, local communities and shoreline owners are told that they do not own the public waters. But when there is a problem, such as an AIS infestation, the state hands them the bill.

As an example, the Lake Koronis community must spend about \$170,000 annually just to keep the public access usable.

The MN DNR currently places a \$10.60 surcharge on a three year boat registration and makes about \$400,000 available to local units of government and lake associations as Invasive Plant Management Grants. This funding has not gone up since the 1990s.

The 2025 DNR Budget Proposal recommends increasing this surcharge to \$25 for a three year boat registration (about \$8.30 cents a year). This investment will more than double the local AIS Management Grants. Local economies depend on lake based recreation, and without grants the expense falls to local governments that must raise property taxes to pay for it, or directly on lake shore residents that must pay out of pocket to manage the state's public waters.

Please let your state representative and senator know that supporting efforts to reduce the spread of AIS is in Minnesota's best long-term interest. Need to find out who that is? Use this QR code or go to www.gis.lcc.mn.gov/iMaps/districts/

Chuck Knopik

Chuck has been a valued member of the board and, for the past year, our Association President. Unfortunately – for us – he is moving and will no longer be able to serve as President or be a board member (you must own property on the lake to be a board member).

We will miss Chuck and his wife Char greatly. Chuck has been extremely effective as President of our association; working collaboratively with a diverse set of personalities. Char has been eager to volunteer at association events and always manages to bring a ray of sunshine to our events.

We will miss Chuck's leadership and miss having them as colleagues and neighbors.

Interim Board President

With the resignation of Chuck Knopik, Harris Goldstein will be taking over as Interim Board President until the next board election, soon after our annual meeting. Harris has been our newsletter editor since 2014, and board member since 2015, and is currently Vice President. He lives on Merrifield Bay.

ANIMAL LOVING VOLUNTEERS NEEDED!

Wild and Free is a non-profit Wildlife Rehab Program in Garrison, MN! Join our team of dedicated volunteers helping wildlife! We are looking for people 18 years or older to help feed the animals, do fundraising, help with our yearly garage sale, donate crafting skills to create treasures for us to sell, and much much more! If you're interested or you want more information please call or email Grace at 320-692-5417 or gracefrickenstein@wildandfree.org



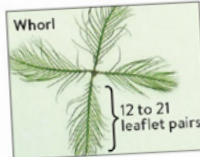
INVASIVE SPECIES



Eurasian Watermilfoil (*Myriophyllum spicatum*)

Characteristics:

- Submerged, limp aquatic plant
- Whorls (circles) of four delicate feathery-like leaves around stem
- Usually 12 to 21 leaflet pairs per leaf



To report invasive species:

Wrap plant in wet paper towel, place in sealed plastic bag, chill or refrigerate, and contact the Minnesota DNR at www.mndnr.gov/ais or 651-259-5100.



CLEANING STATION



FRESHWATER SCIENTIFIC SEARCH AREA

North Long Lake AIS Committee Report

Your Aquatic Invasive Species Committee has been hard at work over the winter.

You will see boat cleaning stations at the boat launches at Merrifield and Birchdale launches. The DNR is going to be doing construction on the 371 Bay launch and has the cleaning station in their rehabilitation plans. Attached to the cleaning station signs you will find tools such as grabbers, boat plug removers, brushes and weed sticks. This will assist everyone to get weeds off of their boats.

Several of your board members and NLLA members attended the DNR AIS Volunteer Program training last August which will enable them to educate the public about invasive species at the public launches. These interactions serve to teach people about invasive species, and to provide information on how to properly clean, drain and dry their watercraft or other water-related equipment after each use, and dispose of unwanted bait in the trash. We are planning on assisting the Crow Wing County and DNR inspectors.

The board has asked Crow Wing County for expanded boat launch inspections for the first 3 weekends in September and a fishing tournament in June.

A new invasive species, Eurasian watermilfoil, was found last fall close to the Merrifield launch. It was brought into the lake by a boater using the launch. The area was treated using Procenacor EC by PLM Lake & Land Management Group.

This spring/early summer there will be an expanded search from where it was discovered last fall for Eurasian Watermilfoil by Freshwater Scientific.

PLM will be doing surveys at the 3 landings twice this summer around July 4th and around Labor Day. This is when the plants are at their peak.

Many of you saw AIS volunteers last year "throwing rakes". We will continue to "throw rakes" looking for invasive species. Our rakes are thrown in the water letting them sink to the bottom. They are pulled along to bring up vegetation which we examine for invasive species. We will be working in high boat traffic areas on the land and off boats.

If you are interested in this, you can come along with us to learn how to throw rakes and learn more about invasive species. The more people that know what invasive species look like the better. The sooner we detect AIS the greater the chance to eradicate or control them.

WALLEYE, WALLEYE

Where Art Thou?

The ice is out, the docks and boats are going in and the walleye opener is just around the corner. Those are the knowns; the unknown is how plentiful the walleye will be this year.

As you may know, the NLLA board has created a committee to investigate how the association can help to improve the walleye fishery on North Long Lake. We met with the DNR last fall and again this spring to talk about the walleye count on North Long.

Unfortunately, North Long is not great for walleye reproduction because of the lake bottom structure. To lay their eggs, walleye look for hard clean substrates like rock, rubble, and gravel in shallow water where the current clears away fine sediment. Our lake bottom is mainly made up of sand or silt. Knowing this, the DNR has been adding walleye fry (small walleye the size of a finger nail) to the lake for several years.

Since the introduction of zebra mussels to the lake the percentage of fry that make it to adult size has been reduced significantly. Both Zebra Mussels and walleye fry rely on plankton as their primary food source. The DNR has started to add fingerlings (finger size fish) to the lake in recent years to improve the percentage of fish that make it to adult size as they don't compete for the same food. Fingerlings are much more expensive and difficult to procure.

So, what can we do? First, we can and will work with the DNR to put together a three-to-five year plan to maximize the addition of fingerling size fish. Currently the DNR is adding fingerling fish every other year and fry the off year. There may be an opportunity for the association to add some fingerlings in the off year. Second, we will investigate the possibility of improving the habitat for walleye spawning and survival; a much more difficult and longer-term process that requires a significant learning curve.

We will keep you posted on our progress on these two initiatives as plans are developed.





SPRING HIGHWAY 371 LITTER PICKUP

This year marks our 30th year picking up litter along Highway 371. Volunteers picked up litter from mile markers 38 to mile marker 40 on both sides of the highway. This area is from the Kubota Dealership to Ojibwa Road.

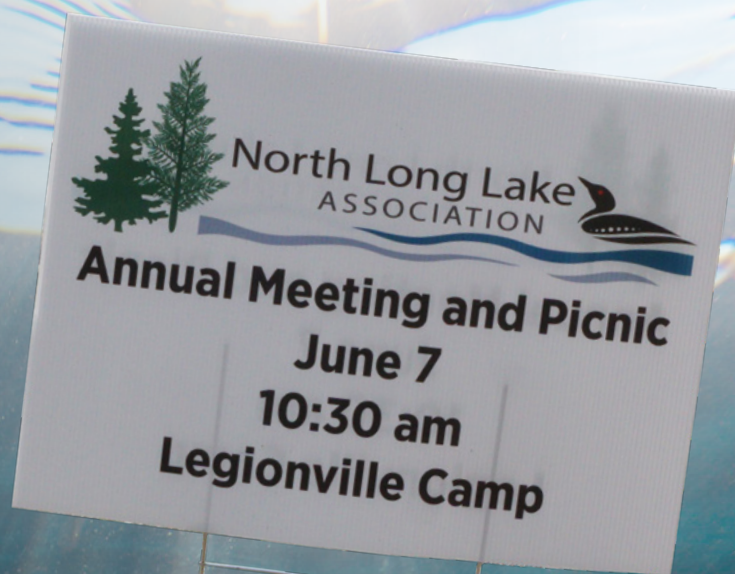
A BIG heartfelt Thank You! to all the volunteers that have helped over the years. Please watch for the upcoming Fall Litter Pickup date.

Our newsletter deadline did not allow us to include names and photos from this spring's litter pickup, but here's a collection of photos from years past. Unfortunately, we could not show all the great people who have volunteered over the years.

North Long Lake ANNUAL MEETING AND PICNIC

SATURDAY JUNE 7

Registration starts at 10:30 am, speakers from 11-11:40 followed by lunch and (during lunch) a short business meeting, with a plan to adjourn by 12:30 pm.





Water Structure Permits

Just a reminder that, in Crow Wing County, water structures require a permit. Minnesota State Statute 6110.1800 Placement of Temporary Structures and Buoys in the Waters of the State requires all temporary structures left in the water between the hours of sunset and sunrise to obtain a permit from the Sheriff's Office in the county in which the structure will be located. This would include temporary signs as well.

It's our understanding that this includes loon nests and even boat lifts that are placed away from your dock. It does not include your dock or lifts right next to your dock.

The permit form can be found at <https://tinyurl.com/nlla-waterstructure>.

Test Your Well for Nitrates

Nitrates in drinking water naturally occur at low concentrations. However, higher concentrations could indicate a source of contamination, typically from fertilizers, animal manure, and/or septic systems. Higher concentrations of nitrates in drinking water can affect how our blood carries oxygen which poses the highest risk for infants.

While most of the area around North Long and Round Lakes are low to medium probability, there are some isolated spots with higher probability. These are on the north side of 371 Bay and the northwest quadrant of Round Lake.

The Minnesota Department of Health recommends well owners test their drinking water for nitrates every year and by providing this service for free the Crow Wing Soil and Water Conservation District hopes to help property owners regularly test their well water.

If you would like to get your drinking water tested, simply follow the instructions on the Crow Wing Soil and Water Conservation District website (<https://www.cwswcd.org/nitratetesting>) and bring your sample into their office during normal business hours.



North Long Lake Association Board of Directors Vacancies

We have a number of vacancies on our Board of Directors. The association, and by extension the board, is charged with protecting our lake for future generations as well as the enjoyment and well-being of our property owners.

Our board is responsible for our association policies, initiatives, and events. We meet the 2nd Thursday of every month. We meet via Zoom video during the months of November through April. If you are interested in volunteering – or would like to know more about our responsibilities, please send an email to president@northlong.org.

And you do not need to be a board member to volunteer! We have standing committees for AIS, the fishery, and social activities. Again, if you are interested, please send an email to president@northlong.org.

Annual Dues Letter has Been Mailed

NLLA Membership continues to be on a calendar year basis – January through December. Our dues letter was mailed in late January, along with a stamped, self-addressed return envelope. If you didn't receive yours, please email our Treasurer at treasurer@northlong.org.





Wakeboard Boating

Wakeboarding, or wake surfing, is becoming increasingly popular. But there can also be problems associated with wake surfing. The large, powerful wakes generated by specialized boats can and have damaged docks, and lifts. Their wake can erode shorelines. The powerful prop thrust of these boats can scour the lake bed – uprooting desirable aquatic plants, smother spawning beds, and increasing lake turbidity.

The solution, based on research at the St. Anthony Falls Laboratory at the University of Minnesota, is relatively simple. Stay 500 feet from shore and in water over 20 feet deep. This precludes virtually all of 371 Bay. But in a lake as large as ours, finding a safe location to enjoy your wakeboat should not be a problem.

Residents who encounter wakeboard boats operating too close to their shoreline are encouraged to call the Crow Wing County Sheriff's Patrol at 218-829-4749 (this is the non-emergency number). If possible, make note of the registration number, or at least a description, of the boat.

Moving docks, lifts, and equipment to another waterbody?

If you plan to move a dock, lift or other water equipment from one lake or river to another, all visible zebra mussels, faucet snails, and aquatic plants must be removed whether they are dead or alive. You may not transport equipment with prohibited invasive species or aquatic plants attached. The equipment must be cleaned before it can be placed in another waterbody.

And if you hire a business to install or remove your boat, dock, or lift, or other water-related equipment, please make sure they have completed AIS training and are on the DNR's list of Permitted Service Providers (<https://tinyurl.com/nlla-dockandlift>). Lake service providers that have completed DNR training and obtained their service provider permit will have a permit sticker in the lower driver's-side corner of their vehicle's windshield. They have attended training on AIS laws and many have experience identifying and removing invasive species.

"Trust, but Verify"

The most critical task for us in preventing the spread of AIS into North Long Lake is to diligently inspect boats entering our lake. Both Curly Leaf Pondweed and (more recently) Eurasian Milfoil got their start right by the Merrifield Bay boat ramp.

Crow Wing County provides inspectors during a portion of the season from 10am to 6pm. But it's a relatively small portion. So we rely heavily on our system of motion activated cameras to be our "eyes" during all daylight hours. These cameras record all boats and trailers using the Merrifield Bay and 371 Bay boat ramps. The camera's resolution is able to identify whether weeds are present and also show the boat's registration number.

Video is uploaded to our service provider's cloud-based server. It is reviewed and possible violators are reported to the DNR. We believe that the presence of the cameras encourages boaters to be proactive in removing weeds from their boats.



YOUTH WATERCRAFT OPERATOR'S PERMIT CLASS:

New Rules in 2025!

Protecting our lake and the people who love it are central to the mission of the North Long Lake Association (NLLA). This includes providing opportunities for members and their families to learn about and experience the best the lake has to offer.

In 2025, the NLLA will once again offer its popular youth watercraft operator's permit for kids 12 -18 to get their Minnesota boating license.

Who does this apply to?

As of July 1, 2025, Minnesota will require operators 21 years of age and younger to possess a valid watercraft operator's permit for motorboats and personal watercraft (PWC). This law will be phased in over 3 years.

Adults born on or after July 1, 2004, are required to have a watercraft operator's permit before operating a motorboat or a PWC on Minnesota waters.

Youth operators under the age of 12 may operate a motorboat with less than 75 horsepower if an accompanying legal operator is on board. However, children may not operate a PWC, even when an adult is on board.

Our Youth Boater Safety class is taught in partnership with the Crow Wing County Sheriff's Office. Registration will open in late April for the class, scheduled for June 18, 2025. Adults who want to improve their nautical knowledge are welcome to sit in on a space available basis.

Watch our emails and social media for registration details later this spring.



North Long Lake Membership

Patrick Schiller-Michels

Thank you to all who have paid your membership dues for this year, and generously donated to AIS prevention, walleye stocking and memorials. We are still down 15% on the number of memberships versus where we ended last year, and down 18% on the dollar amount of overall giving by members versus where we ended last year. Please remember to send in your membership if you have not done so already. Thank you in advance.

DONOR MEMBERS

Adams, Joel & Corrine
 Albertson, Ryan & Tonya
 Albrecht, Alan & Susan
 Albrecht, Chuck & Deb
 Amundson, Shane
 & Kimberly
 Anderson, Dan & Marcie
 Anglin, Leigh & Marlene
 Anthony, Dorothy
 Arie, Jessica
 Arntz, Jonathan & Susan
 Athman, Michael & Julie
 Backlund, Mary
 Baier, Janice
 Bauer, Randy & Cindy
 Bebeau, Muriel
 Becken, Peter & Jill
 Beckmann, Lisa & Jim
 Bengen, Alan & Carol
 Bennett, Don
 Berg, Richard & Debbi
 Berg, Steve
 Berg, Thomas & Deborah
 Berning, Ralph & Sharry
 Betland, Jim & Carrie
 Blohowiak, Ryan & Hilary
 Blythe, James & Elizabeth
 Bottemiller, Mark
 Burley, Robert & Jo Anne
 Busch, Darryl & Angela
 Butler, Thomas & Bonnie
 Carey, Paul & Mary
 Cash, Craig & Jessie
 Christensen, Perry & Ann
 Cook, Jim & Hopkins, Lynn
 Cowan, Robert & Debra
 Cowan, Tamara
 Cronin, Frances & Patrick
 Dalbec, Brian & Barb

D'Angelo, Michael, Danette,
 Anthony, & Ph
 Davies, Trudy
 Dirks, Tim & Teresa
 Dunivin, Nancy
 Eisenschenk, Keith & Brenda
 Elfelt, Larry & Corinne
 Elliott, Mike & Mary Jo
 Elvester, Steve & Maggie
 Esser, Jack & Stephanie
 Fehrman, Bobbi & Joshua
 Filipkowski, James & Bertha
 Fischer, Randy &
 Kay Olson-Fischer
 Fisher, Brian & Debra
 Forsythe, Thomas & Kelli
 Fortney, Paul & Katy
 Fritz, Julie
 Gapinski, Gary & Mary
 Genelin, Loren & Sue
 Germann, Peter & Elizabeth
 Glende, Robert & Becky
 Goldstein, Harris & Marijo
 Gregory, Gary & Diane
 Haecker, Mark
 Hague, Robert & Margaret
 Halloran, Michael
 Halva Rob & Judy
 Hammer, LeAnne & Bob
 Hartup, Grant
 & Nuebel, Lori
 Hastings, Wade & Karen
 Heath, Paul & Lynnette
 Henkemeyer,
 Richard & Catherine
 Hight, Sara
 Hill, Eric & Quigley, Patricia
 Hill, Kevin & Nancy
 Holewa, Joetta
 Hondo, Lynn & Kay
 Hradsky, Wes & Joan

ITLDO Properties LLC
 Janzen, Warren & Dianne
 Jensen, Andrew & Rebecca
 Johnson, David & Corrine
 Johnson, Greg & Mary
 Johnson, Thomas & Lois
 Jones, Guy & Catherine
 Joyce, Pat & Nancy
 Junker, Diane
 Kevin McMemimen
 Kiefner, Linda
 Kiley, Michael & Janice
 Kirsch, Mark & Kimberly
 Knooihuizen,
 Paul & Deborah
 Knopik, Char & Chuck
 Koopmeiners, Scott & Debra
 Krantz, Jerry & Wendi
 Krohn, Wes & Nicole
 L. T. Laskow
 Ladwig, Bill & Julie
 Lamp, Judith
 Lavallee, Cheryl & Dean
 Lemieux, Brian & Jacquelyn
 Lemieux, Ryan & Julie
 Lenz, Dorothy & Richard
 Lenzen, Jim & Penny
 Lobitz, Lyle & Mary
 Lowey, John
 & Sharon Berman
 Marszalek, Robert
 & Strand, Deborah
 Martell, Cody & Amanda
 McShane, Brian & Bridget
 Medeck, Art & Linda
 Mehr, Tom & Jacki
 Mehta, Sengsadeth & Apur
 Meuwissen, Lynn
 Miland, Lynn & Randall
 Miller, Geoffrey & Sharon
 Miller, Jean

Miller, Steve & Marnie
 Miller, Tom & Julie
 Minke Family
 Molin, Conrad & Marlene
 Moody, Roger & Karen
 Moore, David & Diane
 Morris, Ardis
 Morris, Mark & Patricia
 Mortier, John & Loretta
 Motz, Craig & Lisa
 Muehler, Shawn
 Nelson, Donna
 Newman, Dennis
 Newville, Greg & Jill
 Niccum, Paul & Sandra
 Nordstrom, Keith & Susan
 Nydegger, Joe & Linda
 Obeidzinski, Ron & Sue
 O'Connor, Brenda & Shawn
 Olek, Jeff & Deb
 Pater, Lyle & Paula
 Person, Jennifer
 Peterson, Tom & Le Ann
 Peterson, Wayne & Leesa
 Pierce, Ryan
 Pike, Dan & Sherri
 Piltz, Tyler & Brandi
 Pluth, Patti
 Popp, Eric & Arby, Lisa
 Potvin, William & Cynthia
 Prom, Ervin & Renee
 Ralph, Stephen & Susan
 Randahl, Greg
 Ransom, Jerry
 Raskob, Paul & Sherri
 Reuter, Jerry & Lois
 Reuvers, Gayle
 & Schulz, Chris
 Reyes, Michael & Jenny
 Ribar, Angela & Scott
 Richmond, Edmund & Vicky

Ricke, Jerilyn Trustee
 Ritter, Dale & Lori
 Roberts, Walter & Corinne
 Robertson, Michael & Gail
 Roche, Kevin
 & Susan Woodwick
 Rock, Carl & Linda
 Rolf Engbretson & Liz Pratt
 Ross, Tim & Diane
 Ryan, William & Cynthia
 Sandberg, Bruce & Cindy
 Sapletal, David & Martha
 Scherer, Steven & Mary
 Schiller-Michels,
 Patrick & Linda
 Schmidt, Delbert & Nancy
 Schmidt, William & Fern
 Schultz, Steve & Julie
 Shaw, Margaret
 Shawgo, Bob & Becky
 Smith, Michael & Nancy
 Smith, Thomas & Kimberly
 Snaza, Lawrence & Marilyn
 Sobotta, Pat & Karen
 Southerling, Richard
 Spear, Richard
 & Andrea Albrecht
 Stocking, Pat & Janelle
 Storms, Charlie & Cathy
 Strait, Richard
 Strohmayr, Frank & Nancy
 Swanson, Thomas & Helen
 Swenson, Mark & Judith
 Terhaar, Tom & Kathy
 Thorson, Thor & Kimm
 Thune, Kent & Kathy
 Thunell, Richard
 Trisko, Cheryl
 & Schoeppach, Judy
 Tuchscherer, Mike & Erika
 Turcotte, Lance & Karri
 Turcotte, Richard & Collette
 Up North INC. DBA
 Sullivans's Resort
 Urke, Brandon & Emily
 Vahey, Michael & Nancy
 Villwock, Gary & Lola
 Walls, Billy & Jennifer
 Walters, Thomas & Roberta
 Weaver Family
 Weiss, Janice
 Welty, Bruce & Judy
 Wesch, Scott & Susan
 Whalen, Charles & Marnie
 Whitson, Todd & Corrine

Wikstrom, George
 Windjue, Heather & Rodney
 Wodicka, Jeffrey & Julie
 Wolf Group LLC
 Wright, Sandra
 Yeager, Tom & Lora
 Young, Charles & Margaret
 Young, Rich & Marcia
 Zander, John & Sandra
 Zelenak, Bob & Diane

REGULAR MEMBERS

6104 Birchdale LLC
 Alderman, Gary & Lynnette
 Anderson, Dave & Patty
 Anderson, Jim & Mary
 Anderson, Mary & Joseph
 Anderson, Tonia & Nick
 Bakken, Debra
 Barto, Daniel &
 Shirley Rev Trust
 Becker, Steve & Claudia
 Bentler, Kenneth & Heather
 Borowicz, Jerome & Renee
 Boy Scouts of America
 Buckingham,
 Rod & Deemaris
 Bye, Brad & Pat
 Carlson, Steve
 & Lisa Hentges
 Chandler, Tom & Valerie
 Conn, Phillip &
 Charissa Morris-Conn
 Connor, Jim & Sue
 Corrigan, Shannon & Kerry
 Dale, Milton & Karen
 Dalos, John & Deborah
 Davis, Greg & Jody
 Degen, Michael & Julie
 Dorion, Pamela
 & Turpin, John
 Driscoll, David & Kim
 DuBois, Ralston & Judy
 Eliason, Jacob & Bonnie
 Feriancek, Jerry & Rose
 Fox, Christian & Judy
 Gabbert, Shon & Jacqueline
 Garske, Tina
 Gasik, Joseph & Patricia
 Gilbertson, Larry
 & Jenelle Thelen
 Goeritz, Robert
 Greiling, James & Wendy
 Greve, Jeffrey & Bethany

Griego, Edwin & Kristi &
 Wilmer, Corey
 Griego, Kristie & Edwin
 Guin, Michael & Lori
 Hagelberger, Roxanne
 & Steve
 Halbur, Gene & Dianne
 Hansen, Alan & Barbara
 Hansen, Ed & Judy
 Hewitt, Richard & Jenelle
 Hidden Paradise Resort
 Holbrook, Thomas & Lynn
 Holm, David, Dustin,
 Lindee, Dianne
 Honerbrink, Sandra
 & Donald
 Hoops, Bryan
 Hoppes, James & Lois
 Hultgren, Martha & Richard
 Hunter, James & Teri
 Ingberg, Devlin & Elisa
 Jacobs, Michael & Caren
 Jacobsen, Thomas
 Jensen, Nate & Laura
 Johnson, Dan & Bonnie
 Johnson, Jeremy & Sarah
 Johnson, Timothy & Jody
 Jorgensen, Karl & Gina
 Juntunen, Bill
 Kasmirski, John & Annissa
 Kasmirski, Thomas & Cindy
 Kennedy, Kenneth & Joan
 Knese, John & Jenny
 Knock, Kelly & Linda
 Knoll, George
 Knooihuizen, Sandra
 Kobluk, Calvin & Gina
 Korentayer, Elisa
 & Chris Klein
 L & M North Long Lake LLC
 Langley, Greg & Sandra
 Larson, David & Sherri
 Larson, Vicki
 Laudenschach, Joe & Denise
 Le, Hung & Thanh Nguyen
 Legionville School,
 Safety Patrol
 Lindquist, June
 Litchy, Hilary & Mary
 Loney, Al & Sandy
 Lopez, Jose & Kristen
 Marshik, Judith
 Masterson, Aaron & Sarah
 McCormick, Mary
 Meier, John & Dana

Meier, Marsha
 Messing, Diane
 Morgen, Michael & Penny
 Myers, Doug & Bryan
 Narlock, Nancy & James
 Nordlocken, Roger & Denise
 Nygaard, Mary
 Oberhamer, Mark & Linda
 Olejnicak, Michael & Janice
 Olson, Bob & Peng, Doug
 or Joyce Kraut
 Orth, Mark & Lisa
 Ostrowski, Ryan & Mindy
 Owen, Robert & Karen
 Pearson, Charles & Marva
 Plamann, Patrick & Joy
 Plate, Paul & Sheryl
 Polaski, Neil & Shirley
 Prentice, Jerry & Tamra
 Puffer, Chuck & Lana
 Purpur, Steve & Doreen
 Remark, Steven & Diana
 Riedel, Mark & Tina
 Robison, Mark & Josephine
 Ross, John & Laura
 Rueckert, Craig
 Schiffler, Michael & Lori
 Schneider, Mark & Janet
 Schultz, Nicholas & Alexis
 Seykora, Bob & Karie
 Shipman, Daniel & Nancy
 Shoberg, Paul & Jewel
 Skirka, Mary
 Smyrski, John & Meg
 Soule, Rick & Judy
 Springer, Hugh & Joni
 Staley, Dan & Morgan
 Streeter, Tom & Cindy
 Stroschein, Marvin & Sharon
 Suite Estates LLC
 Swartzentruber, Jon
 Thomas, Don & Angie
 Thompson, Rodney
 Thunell, Norman
 Torborg, Gary & Char
 Tuchscherer Brothers LLC
 Villwock, Mike & Barbara
 Wagnild, David & Wendy
 Weiland, John & Judy
 Wennberg, Jon
 West, Susan
 Wicklund Family Trust
 Woelfel, Timothy & Gail
 Wynn-Pratt, Aimee Ellen
 Yarmon, Pete & Jane

04/04/25

Cash Basis

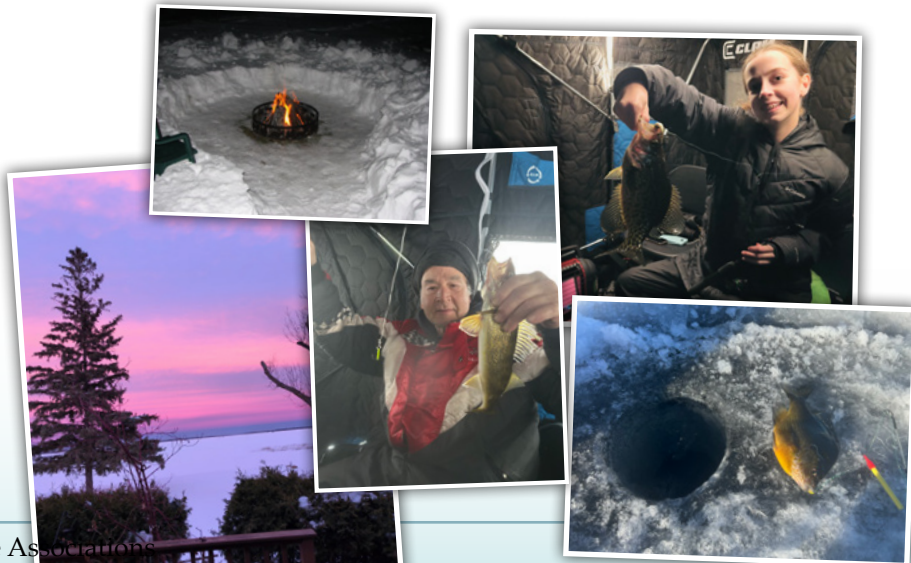
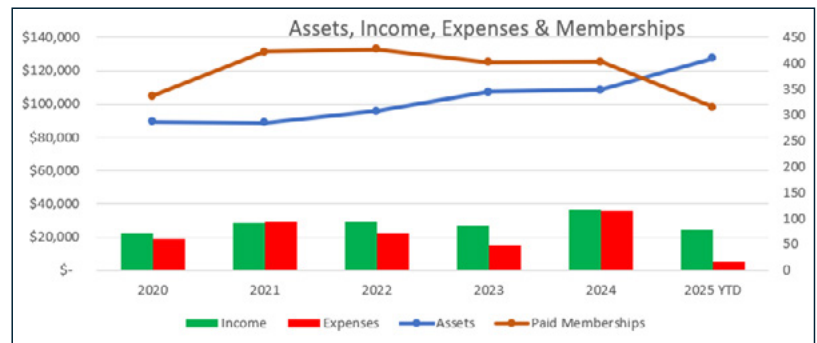
Balance Sheet by Class

As of March 31, 2025

	Ais Fund	Emergenc...	General Fund	Walleye F...	Unclassified
ASSETS					
Current Assets					
Checking/Savings					
MMFCU 13 Month CD apy 5.05	0.00	50,000.00	3,895.08	0.00	0.00
MMFCU 7 Month CD apy 4.504	0.00	0.00	21,141.91	0.00	0.00
MMFCU Checking	9,998.83	0.00	41,239.69	735.00	35.00
MMFCU Savings	0.00	0.00	5.89	0.00	0.00
Total Checking/Savings	9,998.83	50,000.00	66,282.57	735.00	35.00
Accounts Receivable					
Customer Invoices	0.00	0.00	0.00	0.00	-35.00
Total Accounts Receivable	0.00	0.00	0.00	0.00	-35.00
Other Current Assets					
12000 · Undeposited Funds	0.00	0.00	315.00	0.00	0.00
Total Other Current Assets	0.00	0.00	315.00	0.00	0.00
Total Current Assets	9,998.83	50,000.00	66,597.57	735.00	0.00
TOTAL ASSETS	9,998.83	50,000.00	66,597.57	735.00	0.00
LIABILITIES & EQUITY					
Equity					
32000 · Retained Earnings	0.00	50,000.00	57,775.49	600.00	0.00
Net Income	9,998.83	0.00	8,822.08	135.00	0.00
Total Equity	9,998.83	50,000.00	66,597.57	735.00	0.00
TOTAL LIABILITIES & EQUITY	9,998.83	50,000.00	66,597.57	735.00	0.00

NLLA Balance Sheet by Class as of March 31, 2025

ASSETS	
Current Assets	
Checking/Savings	
MMFCU 13 Month CD apy 5.05	53,895.08
MMFCU 7 Month CD apy 4.504	21,141.91
MMFCU Checking	52,008.52
MMFCU Savings	5.89
Total Checking/Savings	127,051.40
Accounts Receivable	
Customer Invoices	-35.00
Total Accounts Receivable	-35.00
Other Current Assets	
12000 · Undeposited Funds	315.00
Total Other Current Assets	315.00
Total Current Assets	127,331.40
TOTAL ASSETS	127,331.40
LIABILITIES & EQUITY	
Equity	
32000 · Retained Earnings	108,375.49
Net Income	18,955.91
Total Equity	127,331.40
TOTAL LIABILITIES & EQUITY	127,331.40





NISSWA DOCK
DOCKS • LIFTS • SERVICE
NisswaDock.com

24428 SMILEY ROAD
NISSWA MN
Toll free | 800-322-3525
Web | NISSWADOCK.COM



**MATTSON
LUMBER
COMPANY**

**Quality Materials
To Serve You Better**

We carry a full line of
building materials for all
your construction needs.

Marvin Windows ~ Acclimated Doors & more!

FREE ESTIMATES • FREE DELIVERY

Mon.- Fri. 7am - 5pm
3 MILES SOUTH OF NISSWA ON HWY 371

218.963.7470 | Fax 218.963.7480
Hwy. 371 South, P.O. Box 149
Nisswa, Minnesota 56468



WASTE PARTNERS INC

BETTER PRICING • BETTER SERVICE
BEST VALUE
218-824-8727
www.wastepartnersinc.com
Online & Auto Pay Available
ACH Payment Discount

Business
— EXCELLENCE AWARD —



NOW OFFERING FREE
WEEKLY CURBSIDE RECYCLING
IN MANY AREAS!

Spring 2025 Round Lake Walleye and Northern Pike Fishing Report

by Phyllis Trcka



The 2024 spring Round Lake newsletter included a report by DNR Brainerd Area Fisheries Supervisor Mike Knapp discussing the stocking and surveying of walleye and northern pike in Round Lake which also includes Gull as part of the chain of lakes. Round Lake is stocked each spring with 627,000 walleye fry. An additional fall stocking of walleye fingerlings occurs when fall electrofishing rates are below 15 young of year (YOY) walleye per hour for two consecutive years. These stocking rates are established using MN DNR protocol have been a part of Round Lake's management plan since 2009.

I was curious about the future of stocking and surveying Round Lake, the fishing outlook for 2025, and what the association could do to help. A random visit to the Brainerd area DNR office resulted in an interview with John Kempe, Assistant Brainerd Area Fisheries Supervisor. John discussed an exciting night of electrofishing in the fall of 2024 on Round Lake. The young of the year walleye were captured, counted and measured. Round Lake sampled a respectable 11 YOY walleye/

hour while Gull had a whopping 196 YOY walleye/hour. This is one of the highest recorded YOY walleye catch rates ever on Gull. If survival of the YOY walleye is high Gull Lake has the potential to have great fishing in the future. We expect these fish to be close to a harvestable size in 2027.

A natural follow-up question for John was is there more the Round Lake Association could do to boost the walleye numbers? He said, "really no". More stocking does not mean a better outcome. The rate walleyes are currently stocked at provides enough to create a fishable population, while also allowing good growth rates and a healthy population of other game fishes such as Largemouth Bass, Black Crappie, and Northern Pike. The surveys are a huge guide to determine if Round Lake's management plan is working and at current, it appears to be. The best action the Round Lake Association members can do to be good lake stewards is to limit runoff from impervious surfaces. This can be done via natural shoreline vegetation buffers as it helps reduce the amount of water/nutrient runoff into the lake which can cause algal blooms.

The discussion with John was mostly geared towards walleye but anglers who love to northern pike fish will be happy to hear the surveys are showing good results. The numbers are consistent and show a decent size structure. Round lake may not have as many 40-inch pike as Gull but they are nice sized, with the average length during the last survey being 23.5 inches.

For more information, the Minnesota DNR website is an excellent resource to understand the number and size of species surveyed in Minnesota lakes. You can find this information at www.dnr.state.mn.us/lakefind/index.html. Give it a try this summer, you never know what you'll discover!

3rd Annual Fourth of July Round Lake Boat Parade

Decorate your watercraft and join the fun! 11AM

Meet at the lakes NE corner to parade around Round. If you can't parade, please wave as the creative boats pass by. Be sure to include this event to your annual family gathering. We'd love to see you! The Round Lake Association



Annual Meeting and Summer Picnic



Round Lake Improvement Association, Inc.
Round Lake Improvement District

Nisswa Community Center, 25628 Main Street, Nisswa, MN
Saturday, June 21, 2025 -Starting at 12:00 noon

Meet your neighbors, learn interesting updates, and be part of the decision process plus there are prizes to win! Bring a dish to pass. The association will provide pulled pork and beverages (to include beer) as we have done in the past.

Bring the family! We hope to see you there.

Sale Around Round Is Back in the Spring

Saturday, June 7, 2025
Participation cost only \$5.00!!

Everyone living on County Road 115 is invited to participate!

Garage sale shoppers look forward to this BIG sale!

Clean out that basement, garage and closet and sell your treasures to someone else. If you would like to participate, please fill out the form below and return it along with your check for \$5.00 payable to the Round Lake Association. A garage sale sign will be delivered to you which will identify you as a paid participant in this event. The money we collect is used to pay for advertising and signs. This is meant to be a break even event for us. If you have any questions, call Linda Esser 218.963.2752.

Name _____

Lake Address _____

Lake Phone _____ Cell Phone _____

**Please mail your check for \$5.00 with this form by
Friday, May 30, 2025 to: RLIA, PO Box 378, Nisswa, MN 56468**



2025 Artificial Loon's Nest Report

by Phyllis Trcka

As the Round Lake loon observer, I have been educating myself as to the nesting habits of these birds. Last spring I attempted to position an artificial loon's nest on the northwest corner of the lake for an interested pair to move in. The main focus was to keep distance from any existing natural nest as the birds are territorial and will battle. The first attempt failed as the winds rocked it apart and the nest was brought on shore early.

This year the goal is to find a sheltered location with deeper water to allow easy access to their food source. There is a southwest corner bullrush weed line with calmer waters about 100 feet from shore. I will cover the canopy of the nest with pine branches and create a mud/ moss nest structure on the platform. As the weed line grows, the nest should become more sheltered and hopefully loon desirable. Be sure to look for it and observe with hope this will be a successful spring.

Round Lake Improvement Association (RLIA) and Round Lake Improvement District (RLID)

Board Vacancies | This year the Round Lake Improvement Association and the Round Lake Improvement District have 2 board member openings.

It should be pointed out that the Annual Picnic/ Meeting on June 21, 2025 is for both the RLIA and the RLID. In accordance with Minnesota statutes, lake improvement districts must open their board elections and annual meetings to all property owners. In addition, provisions must be made for the casting of ballots for those not able to attend the annual meeting. Candidates who have agreed to accept nominations are listed on the ballot, and we will accept write-in candidates. The current board members thank those on the ballot for offering their services to our association/district.

Mail-in ballots must be received by June 18, 2025.

Please remember, it is one vote per property, not one vote per person. Be sure to include your address so we can validate your ballot. Additional nominations for board positions will be accepted from Round Lake property owners at the annual meeting. However, please obtain prior approval from the nominee if they will not be in attendance.

Round Lake Association/Round Lake Improvement District BOARD MEMBER BALLOT

Vote: ☐ Scott Fisher (renewal)
☐ Mark Parrish (renewal)
☐ Write-in Candidate _____

VOTER'S NAME _____

LAKE ADDRESS _____

PHONE _____

SIGNATURE _____

Mail to: Round Lake Ballot
PO Box 378, Nisswa, MN 56468



Scan the **QR Code** or go online to:
<http://roundlakeassociation.itemorder.com/shop/sale/>



The Winter Round Lake Apparel Will Arrive Soon.

Our apologies to those who ordered and paid for Round Lake winter apparel and have yet to receive it. We may have missed many interested shoppers with the fall newsletter that arrived after the snowbirds left. We were not able to reach the order numbers to go into production until now. All orders will be honored. Sorry for the delay.



ROUND LAKE IMPROVEMENT ASSOCIATION

Membership Levels | Contributions Received , 4/9/24 thru 4/30/25

OWL \$25 - \$49.99

Brouwers, Rodney & Janice
Burton, Chuck & Sandy
Crail/Parker, Richard & Lynn
Durrenberger, Lynn Anne
Hayes, Sandra
Houle, Bob & Pam
Husby, Paul & Bethany
Lehner-Smith, Cynthia
Lofgren, Mona
Malone, Sheryl
Meyer, David & Becky
Meyer, James
Morain, Nancy
Pappenfus, Gary & Becky
Rawlings, Randy & Mary Sue
Rogers, Ted & Mary
Ronlund, Linda
Trocke, Dean & Paula
Woessner, Donald & Mary Kay

LOON \$50 - \$74.99,

Arndt, William & Norma Jean
Baxter, Tim & Nancy
Bell, Bud & Cindy
Borchert, Shane & Wendy
Carter, Robert & Kathleen
Christensen, Robert & Blanca
Cibuzar, Shellie
Devlin, Jack & Suzi
Esser, Steve & Linda
Fisher, Scott & Sue
Frazer-Leary, Debra
Gatz, Dale & Debora
Gegner, Cal & Marty
Goers, William & Vicky
Golde, Jason & Jamie
Hastings, Tim & Darlene
Heinen, Nick & Pat
Holmen, Karen
Howard, Barb
Johnson/Palmstein, Carl/Judith
Juhlke, Cliff & Meme
Keller, Dan & Sarah
Kelly/Thelen, EJ & Mary
Langham, Jim & Anita
Majka, John & Laurie
Meyer, John

Musielewicz, Bob & Pam
Nadeau, Joseph & Sheila
Newcomb, Nona
Niebur, Michael & Susan
Norquist, Ben, Mark & Nels
Olson, Karen
Oscarson, Dennis & Mary
Patnode, Mark & Stacy
Peterson, Craig & Karen
Plutowski, Dale & Judy
Radintz, Paul & Diane
Retka, John & Denise
Rhoades, Butch & Janet
Round Lake Bells,
Sauro, Michael
Snyder, Deborah
Wernberg, Kevin & Kathy
Wrede, Robert & Anne
Zard, Clark & Kathy
Zauhar, Mike & Ruth

HAWK \$75 - \$99.99

Allen, Harvey
Gruber, Jason & Debra
Harstad, Glen & Kirsten
Hennes, David & Kathy
Holmstrom, Mary & Cassi
Parrish, Mark & Paula
Rusnacko, Bob & Ruth
Shanks, Brice & Roxane
Ubl/Norlander, Dave & Susan
Walker, Joey

OSPREY \$100 - \$199.99

Anderson, Kent & Tammy
Anderson, Wess & Lorrie
Baker, Bill & Peg
Bardwell, Kevin & Kimberly
Bengstow, Dan
Bickel, Bill & Don
Bowe, Jim & Susan
Breitholtz, Tom & Alice
Burman, Jeffrey & Beverly Lou
Carnahan, Jennifer
Carnahan, John & Cindy
Chmielewski, Joe & Linda
Colby, Steve & Kristi
Cooney, Dick & Gayle

Crew, Charles & Judith
Dalzell, Kent & Connie
Davidge, Eric & Julie
Donovan, Sue
Eckroad, Richard
Ellingson, Ben & Bette
Erhard, Lee & Irene
Etzell, Paul & Mary
Fargo, Matt & Nikki; Tony & Ashley
Field, Vicki
Friesen, Bruce & Carol
Golebiowski, Andy & Brigid
Haarstad, Michael & Anna
Haug, Brian & Randa
Jacks, Nancy
Jarabek, Dennis & Janelle
Kalgren, Ann
Kjorlien, Marilyn
Kruchten, Tom & Susan
Krzmarzick, Scott & Christina
Lahl, Andy & Rebecca
Lancaster, Bill & Elaine
Larson, David & Catherine
Larson, Mike & Ada
Larson, Steven & LuJean
Lee, Dan & Jennifer
Lofgren, Laurie
Ludtke, Craig & Brenda
Lusk, Steve & Kathy
McDermott, Mike & Tanya
Moen, Rolf & Diane
Moore, Tom & Kitty
Muilenburg, Brent & Ally
O'Brien, Kevin & Marion
Pawson Properties Lakeside,
Piepho, Chad & Angela
Potter, Scott & Kathy
Pritchett, Russ
Quist, John & David
Rasmussen, Ali
Richau, Jessica
Ruedisili, Debra
Ryan, Tom & Theresa
Schafer, Mike & Carol
Skogquist, Allen & Alycia
Smith, Ken
Springer, Shirley
Sumption, Trevor & Jody

Swanson, John
Thompson, Jeff & Kim
Trcka, Scott & Phyllis
Ubl, Stefanie & Kaitlin
Veldman, Jeri
Veldman, Mike & Deb
Wickham, Corey & Laura
Wild, Jordon & Kim
Yaeger, Geary & Mary Kay

EAGLE \$200 OR MORE

Bahr, Dan & Christi
Bosacker, Patricia
Carfrae, Steven & Joanne
Carpenter, Mike & Tina
Clough, Steve & Cindy
Cunningham, Robert & Mary
Dillon, Mike & Kim
Flaherty, Scott & Ann
Grossman, Josh & Ellen
Hawkinson, Karl & Jamie
Johnson/Kersten, Mark & Katherine
Krause, Norman & Julie
Madden/Danielson, Mark & Linda
Maki, James & Diane
Mickelson, Keith & Laura
Moore, John & Lourdes
Murphy, Daniel & Kristine
Knodt, Matt & Martha
Richter, Ray & Janice
Roach, Richard & Jennifer
Roberts, Bernie & Linda
Rudlang, Schane & Alisa
Ruether, Brian & Patty
Schmitt, Scott & Stacey
Sebago Resort,
Soderholm, John & Jenny
Soma, Jeff & Barb
Upgren, Stephen & Kathie
Vander Aarde, Luke & Lanette
Waagmeester, Terry & Vickie
Waldron, Jerry & Nikki
Welch, Marty & Jennifer
Wilcox, Charles & Virginia
Womeldorf, Dale & Cathy
Yaeger, Dave & Tina
Zager, Mike & Vicki

MEMBERSHIP RENEWAL

It is that time of the year to renew your membership with the Round Lake Association. Since our fiscal year runs from July 1 to June 30, membership will be for the same time period. The memberships help to keep the Round Lake Association working for you to include building a savings that is used to maintain the access to Gull Lake.

Our membership categories are as follows:

Owl \$25 - \$49.99 | Loon \$50 - \$74.99 | Hawk \$75 - \$99.99 | Osprey \$100-\$199 | Eagle \$200 or over

All contributions will be acknowledged in our newsletter. If you have a question regarding your membership payment, please contact Sue Donovan, 952-292-9746 or sdono@live.com. Please make checks payable to: Round Lake Improvement Association, P.O. Box 378, Nisswa, MN 56468

Name _____ Email _____

Lake Address _____

Other Address _____

Home Phone _____ Lake Phone _____ Cell _____

ROUND LAKE IMPROVEMENT ASSOCIATION, INC.**Account Balances As of 3/31/25**

Account	6/30/24 Balance	3/31/25 Balance
Bank Accounts		
CD First Western 403596	\$ 44,691.46	\$65,944.19
Checking	7,518.22	12,296.52
Savings	29,875.22	20,022.04
TOTAL Bank Accounts	82,084.90	98,262.75
Asset Accounts		
Accounts Receivable	100.00	100.00
Total Asset Accounts	100.00	100.00
Liability Accounts		
TOTAL Liability Accounts	0.00	0.00
OVERALL TOTAL	\$ 82,184.90	\$98,362.75

ROUND LAKE IMPROVEMENT DISTRICT For the Period of 1/1/2024 - 12/31/2024

Cash Balance as of 1/1/2024	\$146,901.13	Description
Inflows:		
	\$1,000.00	Loan from RLIA
	\$7,436.83	Interest
Total Inflows:	\$8,436.83	
Outflows:		
	\$2,237.00	MCIT insurance
	\$250.00	LID Annual Admin Fee
	\$289.00	Summer TSI analysis AWR
	\$3,010.40	Aquatic Vegetation survey
Total Outflows:	\$5,786.40	
Cash Balance as of 12/31/2024	\$149,551.56	
CD	\$(148,465.72)	
Checking Acct Balance	\$1,085.84	



WES HANSON BUILDERS INC
**GENERAL CONTRACTORS
 AND PROFESSIONAL DESIGN**

A Local Company You Can Trust

- ISA Certified Arborists • Structural Pruning and Routine Maintenance
- Insect and Disease Management • Tree Preservation Plans
- Tree Injections • Assessing Hazardous Trees • Tree Removal • Mulch
- Brush Chipping • Stump Removal • Crane Removal

Mike's Tree Company
A Local Company You Can Trust

Mike's Tree Doctors
Your Trees, Our Passion

Mike's Mulch
Premium Mulch and Wood Chips

5906 Pine Beach Rd
 Brainerd, MN 56401
 Insured/Certified
 FREE Estimates

218.825.8207 • WWW.MIKESTREECOMPANY.COM



PRSRT STD
U.S. Postage
PAID
Brainerd, MN
Permit No. 471

North Long Lake Association Inc.
PO Box 54
Merrifield, MN 56465

